

# MUSSER FORESTS INC

INDIANA, PENNSYLVANIA

EVERGREEN SEEDLINGS AND TRANSPLANTS • HARDWOOD SEEDLINGS • ORNAMENTAL AND SHADE TREES  
FRUIT AND FLOWERING TREES • ROSES • SHRUBS • RHODODENDRON • AZALEAS • BERRIES

REC'D  
★ MAR 18 1954  
U. S. Department of Agriculture

## 1954

**MONEY DOES GROW ON TREES**



# 20 Million **TREES** a Year!

# Millions of Musser Trees

Each year over 20 Million Trees from The Musser Nurseries are successfully planted throughout the nation - Because -



Fred Musser compares Spruce seedlings and notes: "Fast growing strain is already ahead." Quality Musser Seedlings are grown from SELECTED seed gathered from trees with SELECTED characteristics.



Musser Seedlings and Transplants grow readily on abandoned farm land; Christmas tree harvest in 6 to 10 years. Some trees may be left for timber.

Musser Nursery No. 3 — Part of 270 acres growing nursery stock is shown below: office, packing buildings, propagating houses, 35-acre pond, and millions of Seedlings, Transplants, Rooted Cuttings and Grafted Specialties.

## Musser Trees Grow!

All tree seed is not the same. If the parent tree has undesirable qualities, its seed will perpetuate those qualities. To be sure of the best obtainable seed, we send men all over the United States to seek out mature, hardy, disease-resistant parent trees with straight stems and foliage of rich color.

We import seed picked from selected stands of timber in Europe, which have been developed through generations to bring out desirable characteristics.

Such selectivity is costly — yes. But it puts meaning into the phrase, "Musser Trees Grow."

## Musser Root System is Superior

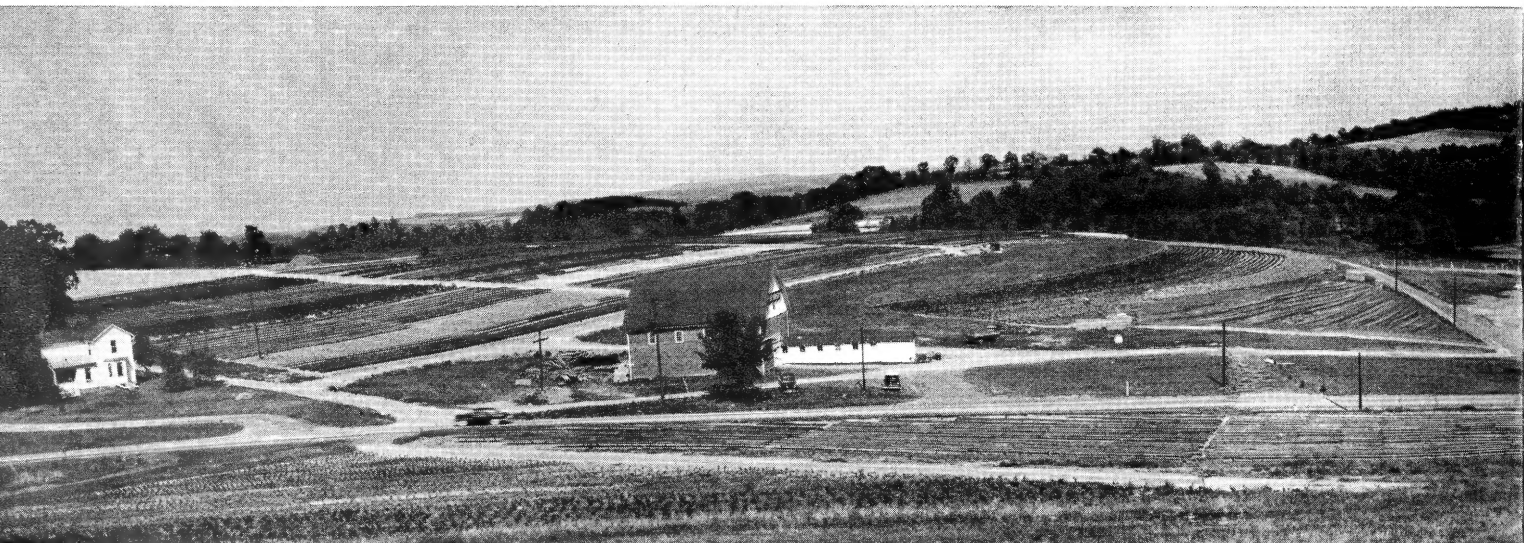
The young Musser tree with strong, extensively branched, but compact, root system is the tree that survives. Good heredity characteristics through selection of seed is the basic requirement — careful handling and scientific culture in the nursery is also essential. The many additional feeder roots in Musser Cultured Tree Stock enable the young tree to extract the most food from the soil of your planting site. Musser Tree Stock is superior. It will survive where inferior planting stock will not.

## Transplanting Improves Roots

Stock is transplanted in our nurseries from one to four or more times. Each time, the longer, more easily damaged roots are reduced so that more small feeder roots develop near the stem. The more feeder roots, the more quickly the tree is established on your land. Also, the resulting compact mass of small feeder roots makes the tree easier to plant.

Each year, in the spring and summer, we transplant hundreds of thousands of seedlings to build more feeder roots. Results prove extra cost is repaid many times over.

## Buy The Best - Musser Trees



# Quality MUSSER Trees

## Plant Them to . . .

- 1** Improve soil by retaining moisture, preventing erosion, and restoring fertility.
- 2** Bring idle agriculturally useless land into production profitably.
- 3** Make a \$1000 investment to plant a 50 acre tract worth \$15,000 for timber in about 30 years (\$10 per acre each year).
- 4** Bring cash profits by thinning Christmas trees from a forest plantation.
- 5** Have no restrictions as to selling for Christmas trees or lumber.
- 6** Are a cash crop requiring no cultivation or extra care.
- 7** Are always at the top of the Christmas tree market.
- 8** Will increase the value of a property if it is being held for resale.
- 9** Act as a savings account with a high rate of interest.
- 10** Pay for a college education for your children if started early and properly managed.

## Cuttings and Grafts

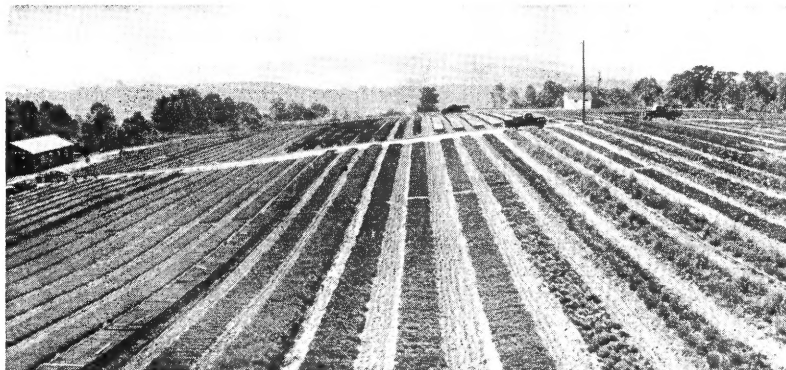
To reproduce exact qualities desired in stock of a certain species, Musser Forests propagates by cuttings or grafts.

**ROOTED CUTTINGS** are small branches from perfect specimen trees, rooted in our greenhouses under controlled conditions of fertility, moisture and temperature. In cases where a species will not root from cuttings . . .

**GRAFTS** are produced by introducing cuttings of the desired quality on to hardy root stock of a related species. Grafting is a complicated cultural process covering some months.



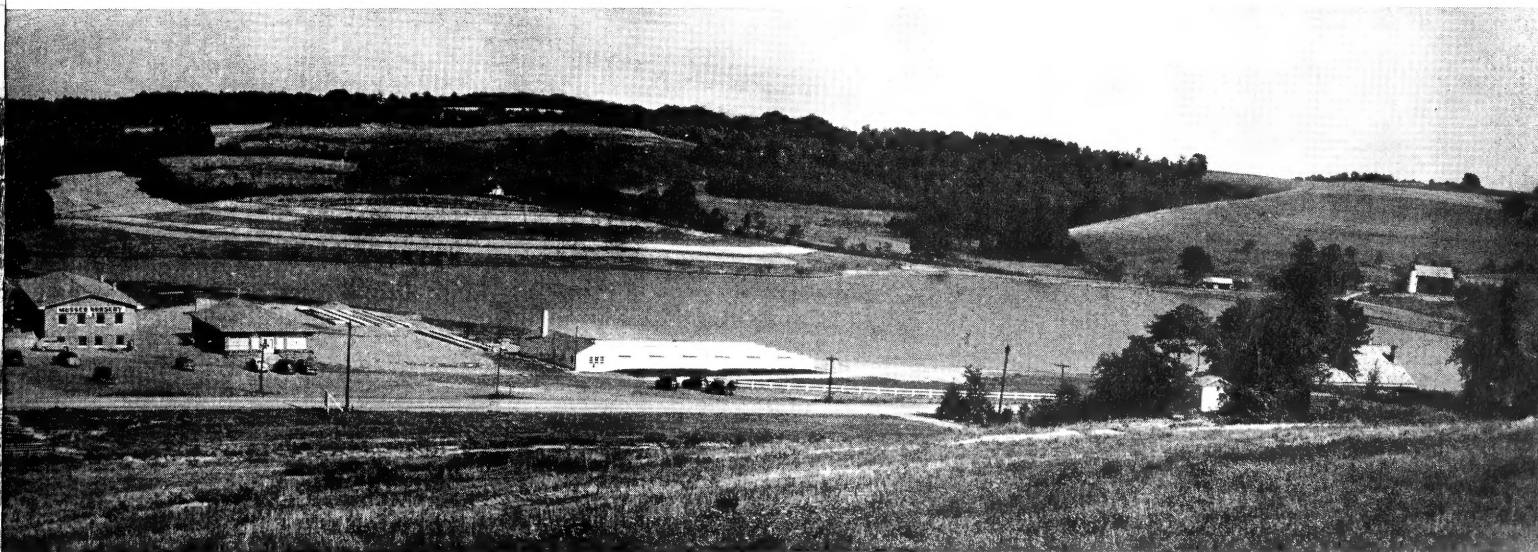
Nursery No. 1 — Transplanting. This nursery is a choice location for Transplants and larger stock. Thousands of Seedlings are transplanted each year for sturdier root structure. The tremendous volume of three nurseries means low prices.



Nursery No. 2 — Located at high altitude. Soil is particularly suitable for building root structure. Musser scientific culture successfully develops TREES that GROW!



Propagating House Culture of Rooted Cuttings to guarantee true qualities.



# Year 'Round Beauty

The items listed below are well branched, heavy stemmed, and will develop rapidly into beautiful evergreen foundation plantings, or valuable specimens.

Flowering shrubs listed on page 19 can be added for seasonal color. All items listed on this page, 5 at the 100 rate.



WHITE PINE



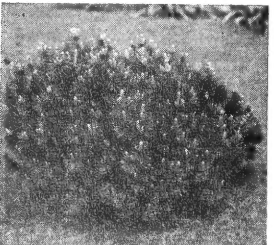
SCOTCH PINE



RED PINE



AUSTRIAN PINE



MUGHO PINE, UNSHEARED

## WHITE PINE

Very adaptable as to soil, will do better on heavy wet soils than the other pines. Very soft, silver-green needles 2½" to 5" long. Shear for compact form. Excellent, fast growing windbreak.

See center pages for Seedling and Transplant Stock

## SCOTCH PINE

One of the most rapid growing species. Especially good when sheared. Musser's Special Strain Scotch Pine retains its blue-green or silvery-green color in cold weather. Needles, 1½-2½" long, curled.

Per 100

\*6-yr. Twice Trans. 16-20" 100.00

\*7-yr. Twice Trans. 18-24" 150.00

\*Packed in ball of peat moss

## AMERICAN RED PINE

A rapid growing bushy tree, very popular. Dark green, soft needles 4" to 7" long. Requires sun. Excellent for background or fast growing windbreak.

Per 100

5-yr. Twice Trans 10-16" 75.00

Not packed in ball of peat moss

\*7-yr. Twice Trans 18-24" 100.00

\*8-yr. Twice Trans. 24-36" 150.00

\*Packed in ball of peat moss

## BALSAM FIR

## DOUGLAS FIR

Fine fragrance. Grown best in the northern states, in a cool moist climate.

Per 100

\*7-yr. Twice Trans. 12-18" 125.00

\*Packed in ball of peat moss

## AUSTRIAN PINE

Beautiful, compact ornamental and Christmas tree. Excellent, fast growing windbreak.

Per 100

6-yr. Twice Trans. 10-16" 100.00

Not packed in ball of peat moss

## COLORADO BLUE SPRUCE

Well known and highly regarded for bluish color and bushy form. Rather slow growing. If moist, will grow well on sandier or heavier soils than most spruce.

Per 100

6-yr. Twice Trans. 8-12" 75.00  
Field grown, nicely branched, bushy plants.

Not packed in ball of peat moss

7-yr. Twice Trans. 12-16" 100.00

Not packed in ball of peat moss

See center pages for additional Seedling and Transplant Stock

## NORWAY SPRUCE

Most rapid growing and popular spruce. Should be sheared when making rapid growth to insure bushy trees. Needles about 1-inch long.

Per 100

\*7-yr. Twice Trans. 12-18" 100.00

Bushy, well branched.

\*8-yr. Twice Trans. 18-24" 150.00

Bushy, well branched.

\*9-yr. 3 Time Tran. 24-32" 250.00

\*Packed in ball of peat moss

See center pages for additional Seedling and Transplant Stock

## MUGHO PINE (True Dwarf)

Per 100

5-yr. Twice Trans. 5-7" 50.00

\*Packed in ball of peat moss

## JUNIPER VIRGINIANA

(Redcedar)

Popular—grows everywhere. Very hardy, fast growing, tall, narrow, compact. Spring foliage, bright green; fall, brownish-red. Easily trimmed to any shape. Produces berries.

Per 100

\*Twice Transplants 18-24" 125.00

\*Twice Transplants 24-36" 175.00

\*Packed in ball of peat moss



BLUE SPRUCE



NORWAY SPRUCE



BLACK HILLS SPRUCE



JUNIPER VIRGINIANA (Redcedar)



PFITZER JUNIPER



CONCOLOR FIR

## Rhododendron and Azalea

add Sparkling Color to Evergreen Plantings See pages 8, 9, 17



HEMLOCK

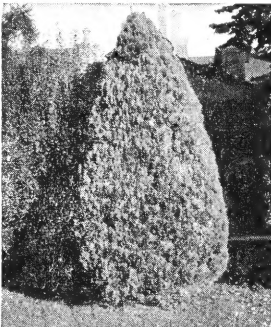
# Landscaping Favorites

*Create Magnificent Effects at Low Cost*

You are familiar with these trees which are successful in countless combinations. The larger stock listed on these pages is especially suitable for quick results, but many other tree items are listed on pages 12, 13, 14 and 15, with landscaping novelties elsewhere throughout this catalogue. Rhododendron and Azalea, pages 8-9.



**DOUGLAS FIR**



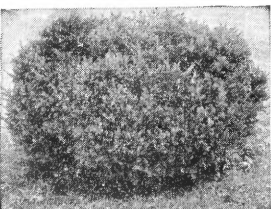
**AMERICAN ARBORVITAE**



**BERCKMAN'S ARBORVITAE**



**UPRIGHT YEW**



**JAP YEW, SPREADING**

## AMERICAN ARBORVITAE

A popular choice for home planting. May be kept pruned to any height, so it is excellent for hedges, mixed plantings, windbreaks, specimens.

**100**

**5-yr. Twice Trans. 8-16" \$25 00**  
Not packed in ball of peat moss. Lots of 10 at the 100 rate.

## PYRAMIDAL ARBORVITAE

FOR IMMEDIATE SPECIMEN PLANTS

**100**

**\*8-yr. 3 Time Tran. 18-24" \$250 00**  
\*Packed in ball of peat moss. Lots of 5 at the 100 rate.

## BERCKMAN'S GOLDEN GLOBE ARBORVITAE

FOR IMMEDIATE SPECIMEN PLANTS

**100**

Very compact. Plant in protected area.  
**\*8-yr. Transplants. 15-18" \$250 00**  
\*Packed in ball of peat moss. Lots of 5 at the 100 rate.

## PFITZER JUNIPER (Hetz Blue)

Dwarf spreading ornamental. Requires sun. Widely used. Very hardy, withstands adverse growing conditions. Excellent in combination with tall growing species.

**100**

**Transplants. 6-10" \$65 00**  
Heavy stem, branched, bushy.  
Not packed in ball of peat moss

**\*Twice Transplants. 10-15" \$90 00**  
Heavy stem, branched, bushy.

Not packed in ball of peat moss  
**\*Three Times Transplants 12-18" spread. each \$2 75**  
For immediate ornamental effect.

\*Packed in ball of peat moss  
All items, lots of 5 at the 100 rate.

## JAPANESE YEW (Upright)

Deep rich green foliage. Sun or shade. Successful where many ornamentals will not grow. Beautiful natural cone shape. This yew can easily be sheared for hedges.

**100**

**\*Taxus Capitata. 10-16" \$200 00**

**\*Taxus Hicksi. 10-18" 200 00**

**\*Taxus Hatfield. 12-18" 250 00**

\*Packed in ball of peat moss. Lots of 5 at the 100 rate.

See center pages for additional Rooted Cuttings and Transplants.

## WHITE BIRCH

One of the most beautiful novelties in shade trees. When mature, the bark of the trees is white and the leaves are of a fine green. Plant several in each location for a picturesque clump.

**100**

**Seedlings. 16-24" \$10 00**  
**Clump Birch, several stems, 3-4 feet. each 5 00**

## WH. FLOWERING DOGWOOD

One of the most beautiful of all spring flowering trees. Lovely four-petaled white blossoms are borne on spreading branches early in spring. Leaves turn brilliant red in fall. Valuable when used in lawn border or as specimen plants. Unsurpassed when used for naturalizing effect. Grows 15-20 feet tall. Photo at right.

**100**

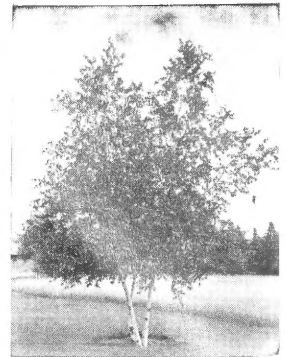
**Seedlings. 5-9" \$13 00**  
**3 to 4 foot trees. each 3 25**

## NORWAY MAPLE

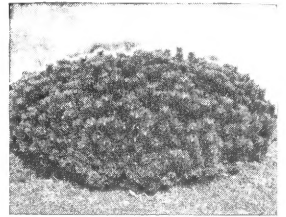
One of the best trees for street planting or for lawn specimens where good form and shade are needed. Its dense leaves are rich green and are held on the tree about two weeks longer than other maples. Grows 50 to 60 feet tall.

**100**

**1-yr. Seedlings. 4-6" \$8 00**  
**Hardy Trees, 6-8 ft. each 4 50**  
**3 for 12 75**



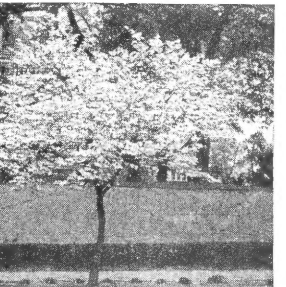
**WHITE BIRCH**



**MUGHO PINE, SHEARED**

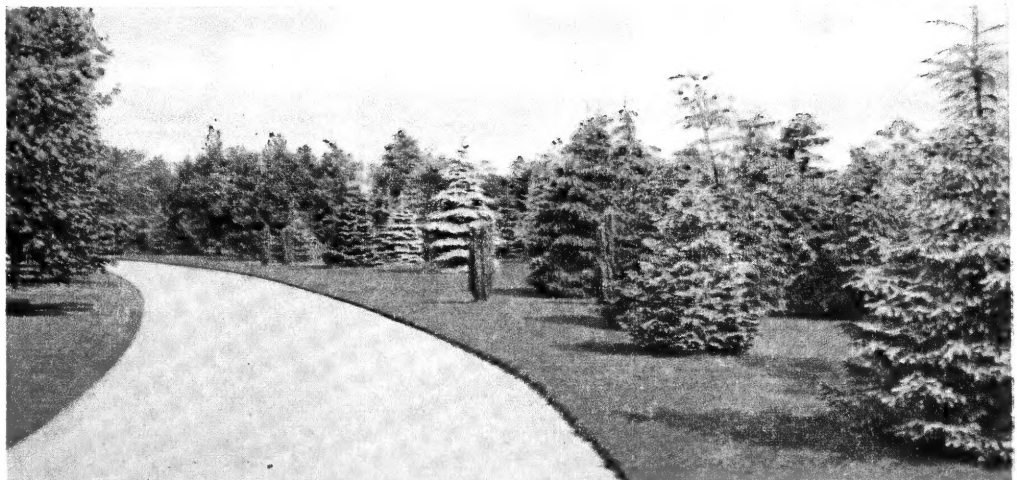


**NORWAY MAPLE**



**WHITE FLOWERING DOGWOOD**

We have many items balled and burlapped in larger stock for nursery pickup only.



# Patented Roses

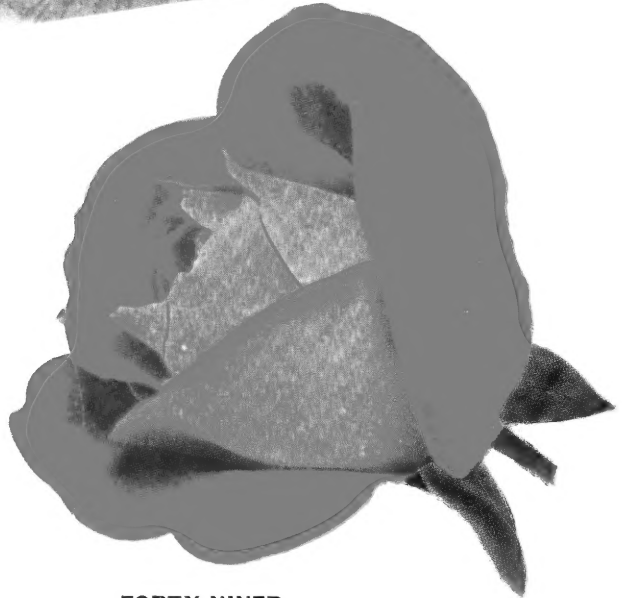
## ALL-AMERICA WINNERS



**CHARLOTTE ARMSTRONG**



**PEACE**



**FORTY-NINER**

**CHARLOTTE ARMSTRONG.** Plant Pat. 455. Blood-red in the bud, opening to cerise. Each \$2.25; 3 for \$6.00; 12 for \$24.00.

**SUTTER'S GOLD.** Plant Pat. 385. Buds are elongated nuggets of gold, etched with tawny carmine. Each \$2.25; 3 for \$6.00; 12 for \$24.00.

**PEACE.** Plant Pat. 591. The bud is rich golden yellow with pink markings, with color deepening as flower develops. Many flowers at once seen in all stages. The whole effect is of several different Roses on one plant. Each \$2.50; 3 for \$6.60; 12 for \$26.40.

**FORTY-NINER.** Plant Pat. 792. Most brilliant bicolored Rose to date. Each \$2.50; 3 for \$6.60; 12 for \$26.40.

**CHRYSLER IMPERIAL.** Plant Pat. 1167. Crimson-red with darker overtones of oxblood-red and garnet in the folds. Large, beautifully formed, velvety flowers. Each \$3.00; 3 for \$7.95; 12 for \$31.80, postpaid.

**Above 5 ALL-AMERICA WINNERS \$10.95**  
**as shown on this page** POST PAID  
**YOU SAVE \$1.55**

**ECLIPSE.** Plant Pat. 172. Clear yellow buds often more than 2 inches long. Each \$1.75; 3 for \$4.65; 12 for \$18.60.

**MIRANDY.** Plant Pat. 632. Rich deep crimson blooms from long, pointed, ovoid buds. Each \$2.25; 3 for \$6.00; 12 for \$24.00.

**NEW YORKER.** Plant Pat. 823. Scarlet with rose-bud undertones. Each \$2.00; 3 for \$5.25; 12 for \$21.00.

**MISSION BELLS.** Plant Pat. 923. A deep glowing salmon-pink, opening to full, high-centered flowers of clear shrimp-pink. Each \$2.25; 3 for \$6.00; 12 for \$24.00.



**SUTTER'S GOLD**



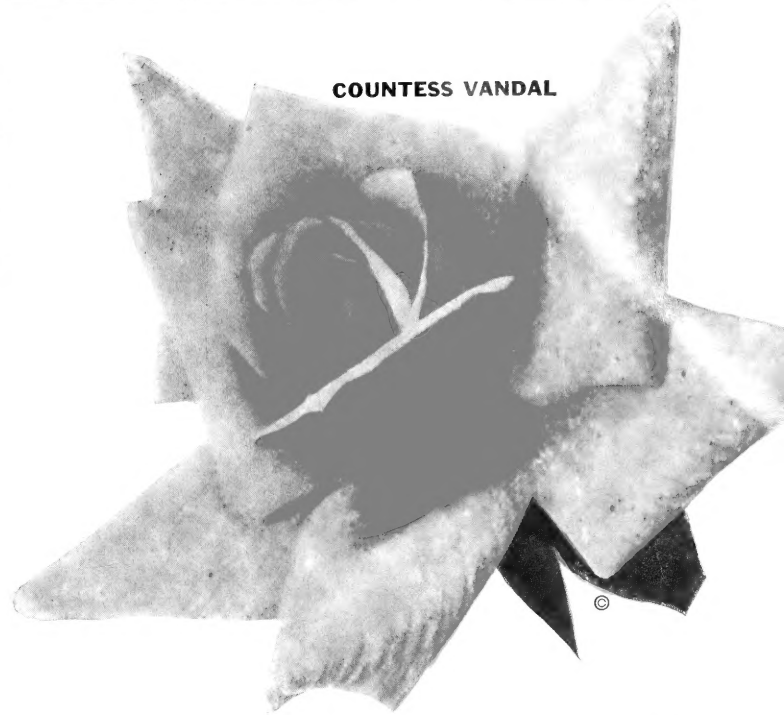
**CHRYSLER IMPERIAL**

# Hybrid Teas

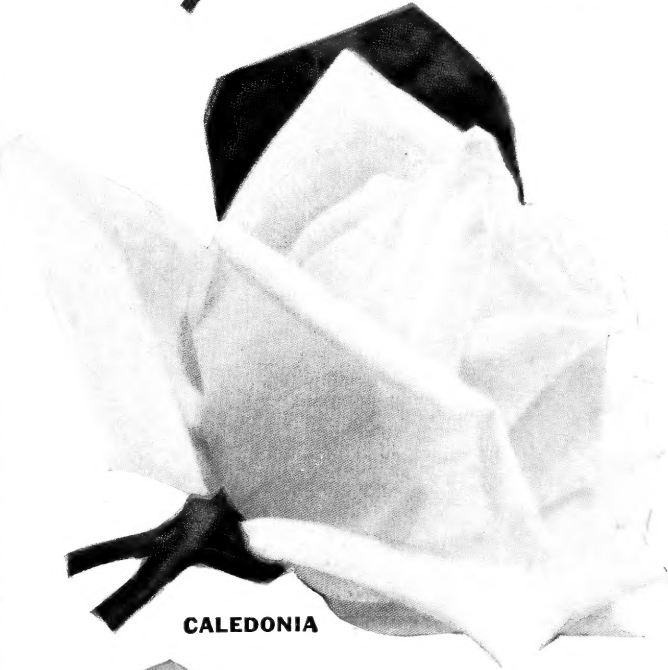
**ETOILE DE  
HOLLANDE**



**COUNTESS VANDAL**



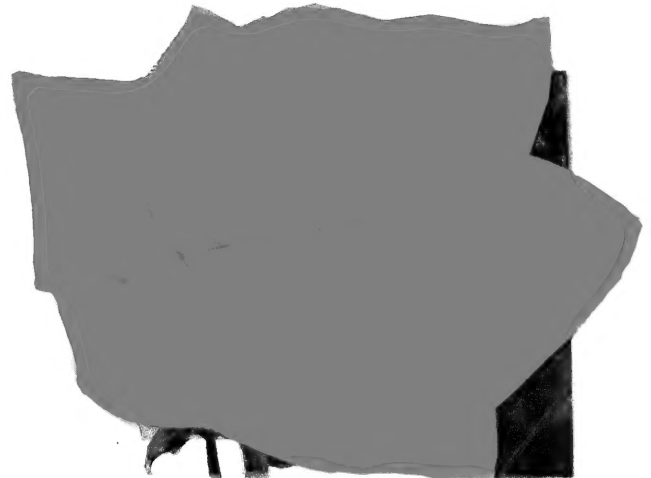
**CALEDONIA**



**DAME  
EDITH HELEN**



**AUTUMN**



Here is a selection of twelve 2-year No. 1 field-grown Rose bushes. These are everblooming Hybrid Tea varieties that will start blooming early in the summer and bloom all season.

We know these plants will give you complete satisfaction . . . We highly recommend them as modern everblooming Hybrid Tea Roses.

1. **Crimson Glory.** Deep crimson.
2. **Caledonia.** Pure white. (Illustrated.)
3. **McGredy's Yellow.** Bright yellow.
4. **President Hoover.** Red-gold.
5. **Dame Edith Helen.** Deep pink. (Illustrated.)
6. **Condesa de Sastago.** Scarlet and gold bicolor.
7. **Mrs. Pierre S. du Pont.** Golden.
8. **Etoile de Hollande.** Red. (Illustrated.)
9. **Christopher Stone.** Scarlet.
10. **Picture.** Rose-pink.
11. **Countess Vandal.** Two-toned. (Illustrated.)
12. **Autumn.** Scarlet with gold. (Illustrated.)

**Any 6**  
No. 1, Field-Grown  
**Hybrid Teas**

**\$7.25**  
POST  
PAID

**Any 3 for \$3.85**  
**Any 12 for \$12.95**

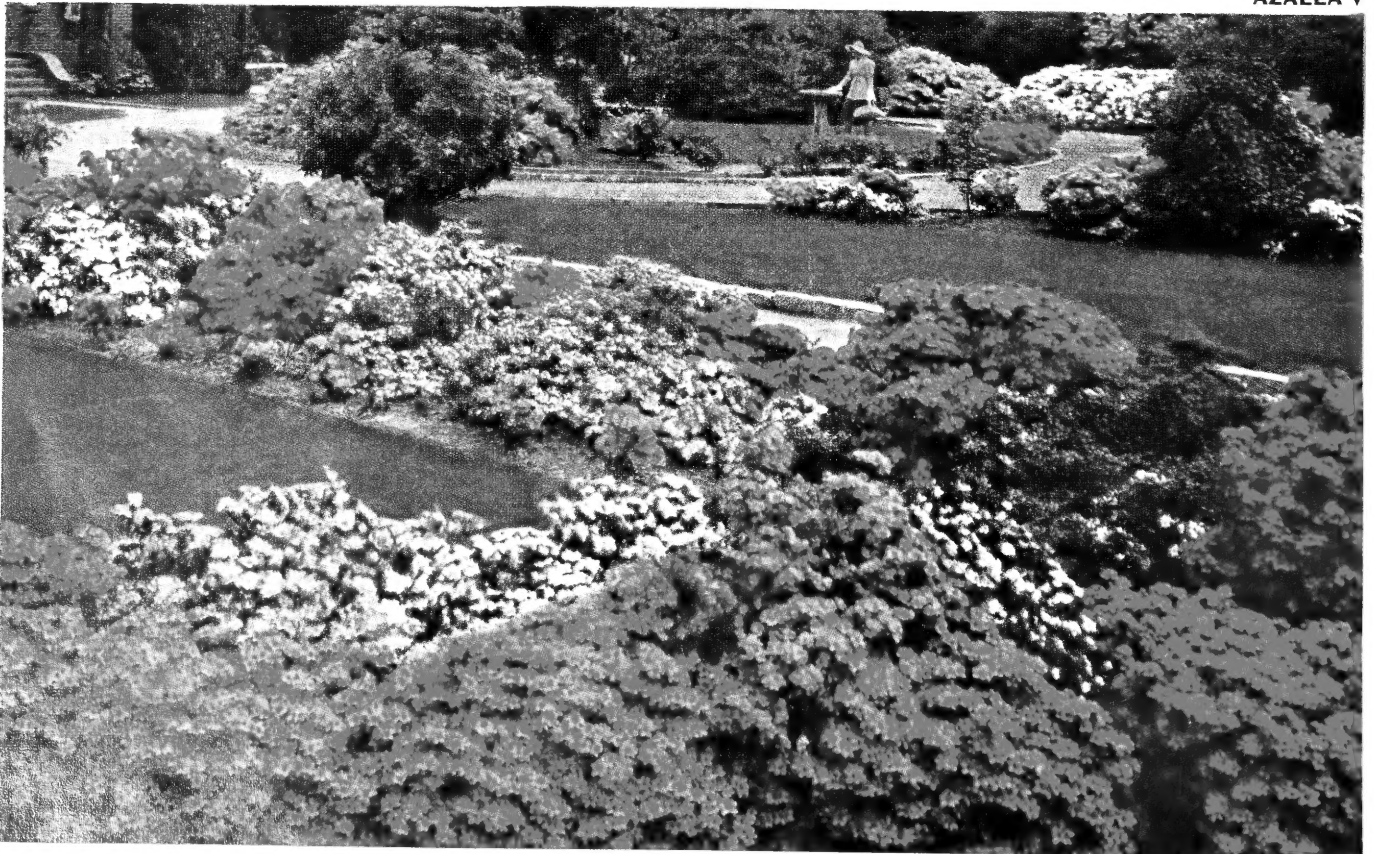
For **FLORIBUNDA ROSES** and **CLIMBING ROSES** see page 23.



↑ RHODODENDRON

## **Musser RHODODENDRON *and* AZALEA**

AZALEA ↓





# Rhododendron and Azalea

All Items on this page Shipped Parcel Post or Exp. Chgs. Col.

Nursery Grown **IMPORTED**

ILLUSTRATED IN COLOR ON FACING PAGE

## Catawbiense Grandiflorum

9-12", 2-yr. excellent heavy plants; 2-4 branches occasionally with flowering buds which will bloom this year. 3 plants wrapped in moist peat moss with dutch burlap. Color, ORCHID.

**6** 9 to 12" plants to a bundle only  
ALL 6 FOR ONLY ..... **\$12.00**  
3 FOR \$6.75

Same as above except 12-15". Extra heavy plants, mostly with buds to bloom this year.

**2** 12 to 15" plants individually wrapped  
in moist peat. BOTH FOR ONLY ..... **\$5.50**  
EACH — \$3.50

## Hybrid Grafted Rhododendron

Twice transplanted 9-12". A few budded to bloom this year. Each plant labeled name and color. 3 to bundle of same color. (Your choice of DEEP RED, PINK, MAUVE, WHITE).

**3** 9 to 12" plants to a bundle only  
ALL 3 FOR ONLY ..... **\$9.50**  
EACH — \$3.95

12-15" budded, ready to bloom this year. Two and three times transplanted. Each plant separately burlapped. Each plant is labeled true to name and true to following colors: DEEP RED, PINK, MAUVE and WHITE.

**3** 12 to 15" plants, choice of 3 colors  
ANY 3 FOR ONLY ..... **\$12.00**  
EACH — \$4.95

## Azalea Mollis

Hardy variety — Azalea requires sun and acid soil. It grows to an ultimate height of 4 to 6 feet.

8-12" well branched and budded ready to bloom this year. Colors: RED, PINK and YELLOW.

**3** Plants wrapped together, same color  
8 to 12"—ALL 3 FOR ONLY ..... **\$7.50**  
EACH — \$3.00

1-1½ ft., 3-yr. Grafts. Plants have 10 to 20 flowering buds ready to bloom. Fine specimen imported plants, with a mass of branches, 8-10" wide. Individually burlapped and labeled with name and color. Colors: RED, PINK, YELLOW.

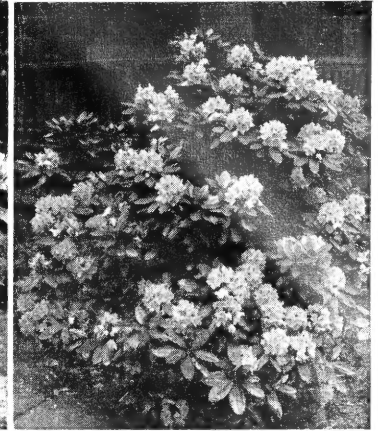
**3** Plants, your choice of colors, 1-1½ ft.  
ANY 3 FOR ONLY ..... **\$13.50**  
EACH — \$4.95

Our Rhododendrons and Azaleas quickly grow into fine bushy specimens of great value. A highly decorative shrub.

**ACID SOIL** — Use well rotted leaves, pine needles, sawdust or alum to make soil acid. See planting instructions sent with order acknowledgment.



YOUNG



MATURE

RHODODENDRON MAXIMUM

## NATIVE

### RHODODENDRON MAXIMUM

Hardy for full shade or partial shade. Large leaf, best foliage of any of the Rhododendrons. Bears large clusters of gorgeous flowers, shaded from WHITE to SHELL PINK, during late June and early July. Lots of 10 at 100 rate. Shipped express or parcel post collect, which ever is less.

SELECT collected plants, single stem to lightly branched.	Per 100
6 to 8 inch ..... (10 at 100 rate) .....	\$ 33.00
7 to 12 inch ..... (10 at 100 rate) .....	40.00
SELECT, STRONG, CLUMPY plants, 3 to 5 branches.	
10 to 15 inch ..... (10 at 100 rate) .....	125.00

### RHODODENDRON CATAWBIENSE —

Differs from Maximum as follows: Lower growing, smaller leaves, deep shades of PINK and ROSE. Sun or partial shade. Lots of 10 at 100 rate. Express or parcel post charges collect.

SELECT collected plants, single stem to lightly branched.	
4 to 8 inch ..... (10 at 100 rate) .....	50.00
7 to 10 inch ..... (10 at 100 rate) .....	60.00
SELECT, STRONG, CLUMPY plants, 3 to 5 branches.	
10 to 15 inch ..... (10 at 100 rate) .....	150.00

### MOUNTAIN LAUREL

KALMIA (hardy). Slow growing, small leaved evergreen. Abundance of pink flowers, late May and early June. Sun or shade. Lots of 10 at 100 rate. Express or parcel post charges collect.

SELECT collected plants, 2 to 4 branches.	
8 to 10 inch ..... (10 at 100 rate) .....	50.00
SELECT, STRONG, CLUMPY plants, 3 to 5 branches.	
10 to 15 inch ..... (10 at 100 rate) .....	125.00



THOUSANDS OF IMPORTED RHODODENDRON FOR SPRING DELIVERY

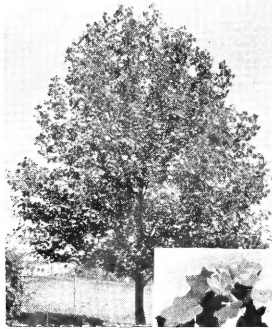
# SHADE and HARDWOOD SEEDLINGS



SHIPPED PARCEL POST or EXPRESS CHARGES COLLECT

No orders for less than 100 except where specified.

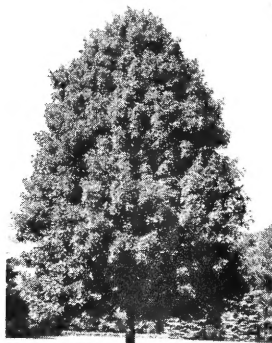
Stock on this page must be paid in full before order is shipped.



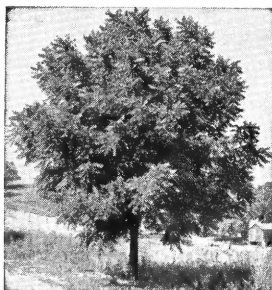
TULIP POPLAR



WHITE OAK



SUGAR MAPLE

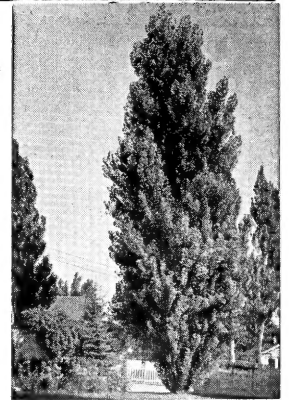


BLACK WALNUT

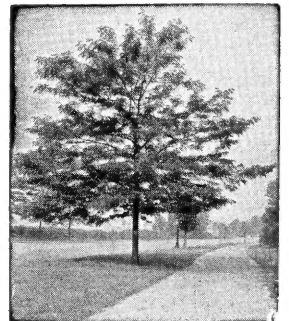


CHINESE CHESTNUT

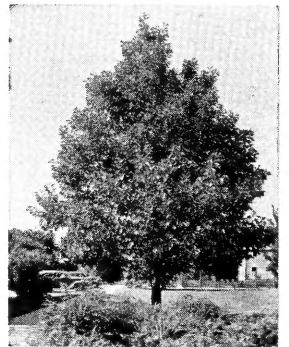
	Per 100	Per 1000
<b>WHITE BIRCH</b> (Clump Birch) ..... 16-24 in.	10.00	50.00
One of the most beautiful novelties in shade trees. Bark of mature trees is white and the leaves are of a fine green. Plant several in each location for a picturesque clump. Photo next page.		
<b>CHINESE CHESTNUT</b> (Blight Resistant) .... 6-12 in.	40.00	xxxx
Seedling stock of variety described on next page.		
..... 12-18 in.	60.00	xxxx
May be ordered in lots of 10 at 100 rate.		
..... 18-24 in.	80.00	xxxx
<b>LOMBARDY POPLAR</b> ..... 6-12 in.	5.00	25.00
Tall columnar tree, ideal for use as screen or wind-break when planted 2 to 3 feet apart. Seedling stock, variety described next page. Photo at right.		
..... 12-18 in.	7.00	35.00
..... 18-24 in.	10.00	50.00
<b>TULIP POPLAR</b> (Liriodendron Tulipifera) 4- 6 in.	4.00	20.00
One of the largest, most valuable deciduous trees for timber and ornamentals. Glossy, hddle shaped leaves. Large greenish-yellow and orange flowers. Very symmetrical. Photo at top left.		
..... 12-18 in.	6.00	30.00
..... 18-24 in.	9.00	45.00
<b>WHITE FLOWERING DOGWOOD</b> ..... 5- 9 in.	13.00	65.00
Seedling stock of variety described on Page 18.		
<b>PINK FLOWERING DOGWOOD</b> ..... 12-18 in.	150.00	xxxx
Seedling stock of variety described on Page 18.		
..... 18-24 in.	200.00	xxxx
MAY BE ORDERED IN LOTS OF 10 at 100 RATE.		
<b>HONEY LOCUST</b> (Thornless) ..... 6-12 in.	5.00	25.00
Tall deciduous tree for shade or lawn specimen. Small fragrant greenish flowers in early summer are followed by large, glossy, brown ornamental pod in the fall. Attracts bees. Photo at right.		
<b>BLACK LOCUST</b> ..... 6-12 in.	3.00	15.00
Thrives in any soil. Fragrant clusters of white pea-like blossoms in spring, small brown seed pods in fall. Attracts bees.		
<b>WHITE OAK</b> — Hardy northern; heavy ... 6-18 in.	8.00	40.00
Monarch of deciduous trees. Splendid for lawn or street use. Disease resistant. Dark red, autumn coloring. Lots of 50 at 100 rate.		
<b>RED OAK</b> — 1-yr. Seedlings ..... 4-12 in.	6.00	30.00
Northern, hardy, rapid growing timber and shade tree. Dark red fall foliage.		
<b>PIN OAK</b> — 1-yr. Seedlings ..... 6-10 in.	15.00	75.00
One of the best shade trees known — of rapid growth. Leaves deeply cut and colors beautiful in autumn. Transplants readily. Lots of 10 at 100 rate.		
<b>CHINESE ELM</b> ..... 6-12 in.	4.00	20.00
Seedlings of variety described on next page.		
..... 12-18 in.	6.00	30.00
Widely planted for fast growing hedges.		
..... 18-24 in.	9.00	45.00
<b>AMERICAN ELM</b> ..... 6-12 in.	4.00	20.00
One of the best loved of our native American trees. Straight trunk branching into graceful vase-shaped head.		
<b>BLACK WALNUT</b> ..... 12-18 in.	12.00	60.00
Seedling stock of variety described on next page. Photo at left.		
<b>WHITE ASH, GREEN ASH</b> ..... 6-12 in.	3.60	18.00
Easy to grow. Tall oval shape permits grass to grow beneath its branches. Brilliant yellow autumn foliage.		
<b>NORWAY MAPLE</b> — 1-yr. Seedlings ..... 4- 6 in.	8.00	40.00
Seedling stock of variety described on next page. May be ordered in lots of 50 at 100 rate.		
<b>SUGAR MAPLE</b> ..... 4- 6 in.	4.00	20.00
Hard maple. Mature trees provide maple sugar products from sap in spring. Brilliant scarlet autumn foliage. Fast growing.		
<b>SILVER MAPLE</b> — 1-yr. Seedlings ..... 12-15 in.	4.00	20.00
Fastest growing maple. Spreading tree growing to 60 to 70 feet. A cut leaf with silvery cast, also silvery bark.		
<b>SHELLBARK HICKORY</b> ..... 6-12 in.	20.00	100.00
Distinctly American tree of walnut family. White, sweetkerneled nuts. Attracts game. Lots of 50 at 100 rate.		
<b>ASH LEAF MAPLE</b> (Acer Negundo) 2-yr... 12-24 in.	5.00	25.00
BOX ELDER — A very hardy, rapid growing, medium sized tree. Will make good growth in dry and cold locations where all else fails. Also used for shelter belts and game food.		



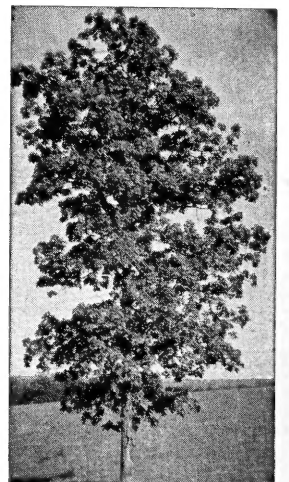
LOMBARDY POPLAR



HONEY LOCUST



PIN OAK



SHELLBARK HICKORY

**Special Offer**  
**ONLY PREMIUM STOCK**

**Special No. 11**

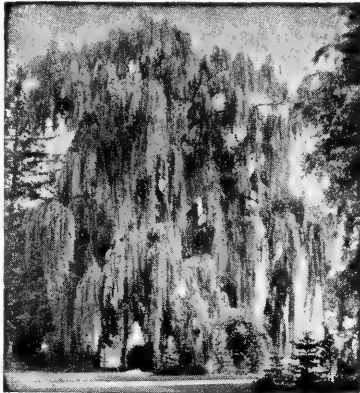
**ONE EACH**

**SHADE TREES**

PICTURED BELOW

**All 3 FOR ONLY \$10.50**

Shipped Express Charges Collect



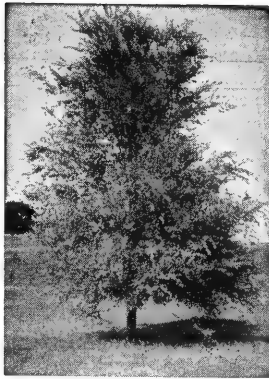
WEeping WILLOW, 6-8 FT.



NORWAY MAPLE, 6-8 FT.



MOUNTAIN ASH, 5-6 FT.



CHINESE ELM

*Musser*  
**SHADE TREES**

*Finest Quality*

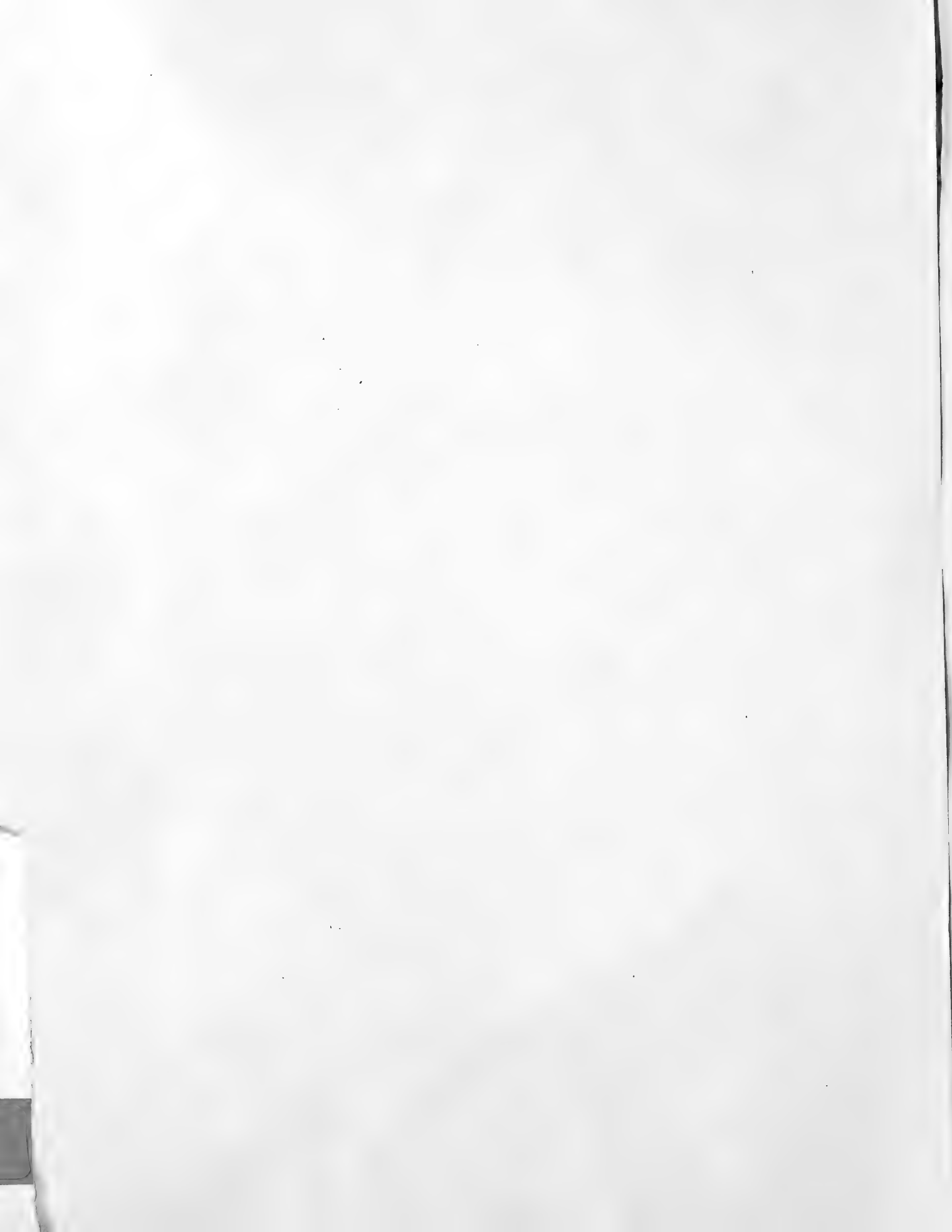


WHITE CLUMP BIRCH

**SIZES LISTED ARE BEST FOR SUCCESSFUL TRANSPLANTING**

Sorry, no C.O.D.'s. All stock on this page must be paid in full with order. Shipped Express Charges Collect except Clump Birch and Chinese Chestnut which are Shipped Postpaid.

	Actual Size	Each	Per 3
<b>WHITE BIRCH</b> (Clump Birch — Several Stems)			
Individually well-branched specimen trees .....	3-4 ft.	5.00	12.50
One of the most beautiful novelties in shade trees. When mature, bark is white and the leaves are a fine light green. Plant several in each location for a rare and picturesque clump, winning the admiration of your friends and neighbors.		Postpaid	Postpaid
<b>NEW CHINESE CHESTNUT</b> (Blight resistant) .....	3-4 ft.	3.50	9.50
Will bear large, sweet, delicious nuts 2 years after planting. Very fast growing. Valuable as ornamental and for shade, as well as for fruit. Plant 2 or more for pollination. Grows 30 to 40 feet tall. See photo on preceding page.		Postpaid	Postpaid
<b>WEeping WILLOW</b> (Wisconsin) .....	6-8 ft.	3.00	7.50
Very rapid growing tree with graceful drooping branches. Will succeed in any location, but prefers moist soil. Especially effective near pools or river banks, along drives or as specimen plants. Frequent cutting back gives a thicker growth of bright green twigs. Grows 25 to 30 feet tall. Illustrated at left.			
<b>NORWAY MAPLE</b> .....	6-8 ft.	4.50	12.75
One of the best trees for street planting or for lawn specimens where good form and shade are needed. Its dense leaves are rich green and are held on tree about two weeks longer than other maples. Grows 50 to 60 feet tall. See photo at left.			
<b>SILVER MAPLE</b> .....	5-6 ft.	3.25	8.75
Most rapid grower of all maples. A large, spreading tree which, at maturity, has a height of 60 to 70 feet. A cut leaf with a silvery cast, and also a silvery bark. Sap is good for sugar making.			
<b>SUGAR MAPLE</b> (Hard Maple) .....	6-8 ft.	5.50	15.75
Brilliant scarlet, orange and yellow foliage in fall. Mature trees are the source of delicious maple sugar from sap in spring. Handsome form. Photo page 10.			
<b>CRIMSON KING MAPLE</b> .....	4-5 ft.	6.50	18.50
You will want to be one of the first to own this new tree. It is a beautiful form of Schwedler Maple, originating in Europe. Like the Schwedler, it develops a rounded, compact top of unusual symmetry, but differs in having foliage of deep, purple-crimson all through the growing months.			
<b>CUT-LEAF WEeping BIRCH</b> (Silver Birch) .....	4-5 ft.	4.50	12.75
Graceful white-barked tree with delicate drooping branches. One of the few shade trees under which grass will grow. The white bark, which develops a year or two after planting, is beautiful in all seasons. Grows 20 to 30 feet tall.			
<b>LOMBARDY POPLAR</b> .....	5-6 ft.	1.50	4.00
Tall columnar tree, ideal for use as screen or windbreak. Thrives in wide range of soil and climatic conditions. Grows unusually fast, requires no pruning. Grows 60 to 80 feet. Photograph is shown on the preceding page.		10 for \$8.00	100 for \$65.00
<b>CHINESE ELM</b> .....	6-8 ft.	3.50	9.50
For quick shade. A very rapid grower with small, dense foliage. Excellent for tall hedge or windbreak. Stands intense cold and extreme heat remarkably well. Excellent shade in 5 short years. Grows 30 to 40 feet. See photo above.			
<b>MOUNTAIN ASH</b> .....	5-6 ft.	4.50	12.75
One of the most ornamental of all trees. Bears large clusters of BRIGHT ORANGE-RED BERRIES from mid-summer until late fall. Grows 20-30 ft. tall. Photo at left.			
<b>MORaine LOCUST</b> .....	5-6 ft.	6.50	18.50
(Plant Pat. 836.) This is a vigorous, fast-growing, seedless tree, shaped much like American Elm, but not susceptible to disease. A clean tree with no ugly dangerous thorns, and no seed pods. The leaves are so fine that, when falling, they practically disappear. Thrives in spite of smoke and soot, on all kinds of soil. Hard wooded; bends but rarely breaks or splits.			
<b>BLACK WALNUT</b> .....	3-4 ft.	3.00	7.50
Rich flavorful kernels. Does well in fertile, well drained soil. Very hardy. Grows almost anywhere in the country. Produces annually large crops of nuts with rich, oily kernels of fine flavor. Fine for desserts, nut bread and confections. Tree grows 25 to 40 feet high; fast growing and long lived. Photo page 10.			



# TERMS

No order can be accepted for less than units of fifty (50) of one variety and size except on items marked with an asterisk (\*). Fifty (50) of one kind and size sold at 100 rate, 500 at 1000 rate, shipped, f.o.b. Indiana, Pa. by express or parcel post collect, whichever is cheaper (unless otherwise noted.) If charges prepaid items and charges collect items are shipped together, entire shipment is charge collect.

Our liability ceases when trees are delivered to carrier.

Orders may be booked with one-half cash with order, balance C.O.D. Fifty (50) cents packing on less than 1000.

All prices NET, no discounts for cash or quantity. WE PACK AND BOX FREE in 1000 lots.

Add 1% Sales Tax for Pennsylvania destination.

Prices subject to change without notice.



Special Strain Scotch Pine  
2 yr. Seedling, Fast Growing

# Musser's Spring 1954 Wholesale Planting List

**MUSSER FORESTS, Inc.**  
INDIANA, PENNSYLVANIA

Our nurseries are open weekdays and Sundays from 8:00 a.m. to 4:00 p.m. during the Shipping Season—March 15 to June 1. Our Nursery Sales Office is located 6 miles north of Indiana on Route 119. Telephone INdiana 5-5686.

**AUSTRIAN PINE** Per 100 Per 1000  
Finest seed from the Austrian Alpine region. A beautiful, dark green compact Ornamental and Christmas Tree.

2-yr. Seedlings	(2-0)	2-4"	5.00	25.00
-----------------	-------	------	------	-------

2-yr. Seedlings	(2-0)	3-5"	6.00	30.00
3-yr. Seedlings	(3-0)	8-14"	8.00	40.00

Excellent, heavy stock suitable for direct field planting.

4-yr. Transplants	(2-2)	8-12"	20.00	100.00
5-yr. Transplants	(3-2)	10-16"	50.00	xxxx
*6-yr. Transplants	(2-2-2)	10-16"	100.00	xxxx

\*5 may be ordered at 100 rate. Packed with ball of peat moss. Use this for an early Ornamental or Windbreak.

**AMERICAN RED PINE**  
Excellent Timber and Christmas Tree. Seed selected by our men from outstanding specimen trees in finest American virgin forests.

2-yr. Seedlings	(2-0)	2-4"	4.00	20.00
3-yr. Seedlings	(3-0)	6-12"	11.00	55.00
3-yr. Transplants	(2-1)	4-8"	15.00	75.00
6-yr. Transplants	(2-2-2)	10-16"	75.00	xxxx
*7-yr. Twice Transplants		18-24"	100.00	xxxx
*8-yr. Twice Transplants		24-32"	150.00	xxxx

\*5 may be ordered at 100 rate Packed with ball of peat moss. Use this for an early Ornamental or Windbreak.

**JAPANESE BLACK PINE — Thunbergii**  
Light green needles 4 1/2 inches long - hardy, valuable for use in regions exposed to salt water spray along the seashore.

2-yr. Seedlings	(2-0)	3-4"	7.00	35.00
3-yr. Seedlings	(3-0)	5-8"	10.00	50.00

**MUGHO PINE — True Dwarf**

2-yr. Seedlings	(2-0)	2-3"	5.00	25.00
-----------------	-------	------	------	-------

3-yr. Seedlings	(3-0)	3-5"	7.00	35.00
4-yr. Transplants	(3-1)	5-7"	20.00	100.00

**PONDEROSA PINE — Western Yellow Pine**  
Hardy, fast growing Pine.

2-yr. Seedlings	(2-0)	3-4"	4.00	20.00
3-yr. Seedlings	(3-0)	5-8"	6.00	30.00

**WHITE SPRUCE**  
Similar to Norway. Fast growing.

2-yr. Seedlings	(2-0)	3-6"	5.00	25.00
3-yr. Seedlings	(3-0)	6-12"	10.00	50.00
3-yr. Transplants	(2-1)	5-10"	15.00	75.00
5-yr. Transplants	(2-3)	6-12"	30.00	xxxx

**SHIPPING** — It may be necessary to ship Roses, Berries, Fruit, Flowering and Shade Trees at a time different from other listed stock. You may receive several shipments before your order is completed. This notice is to save you unnecessary correspondence.

**BLACK HILLS SPRUCE — Fine Ornamental** Per 100 Per 1000  
Most compact Spruce.

2-yr. Seedlings	(2-0)	2-5"	7.00	35.00
3-yr. Seedlings	(3-0)	5-10"	12.00	60.00

**SERBIAN SPRUCE—Picea Omorika—Valuable Ornamental**  
Tall, symmetrical habit of growth, with very narrow branch spread. Needles 1/2 to 3/4 inch long. Glossy green.

4-yr. Seedlings	(4-0)	9-18"	25.00	xxxx
-----------------	-------	-------	-------	------

**MUSSER EXCLUSIVE NORWAY SPRUCE**  
Grown from seed collected by our own men from selected trees. Exceptionally fast growing, straight stem.

2-yr. Seedlings	(2-0)	5-10"	7.00	35.00
3-yr. Seedlings	(3-0)	10-16"	10.00	50.00
4-yr. Transplants	(3-1)	8-12"	16.00	80.00
4-yr. Transplants	(2-2)	10-18"	20.00	xxxx
5-yr. Transplants	(3-2)	12-18"	30.00	150.00

**NORWAY SPRUCE**  
This stock is used extensively for Christmas Tree and Timber plantings.

2-yr. Seedlings	(2-0)	2-4"	3.20	16.00
2-yr. Seedlings	(2-0)	4-7"	5.00	25.00
3-yr. Seedlings	(3-0)	5-10"	7.00	35.00
4-yr. Seedlings	(4-0)	8-14"	9.00	45.00
4-yr. Transplants	(3-1)	4-8"	11.00	55.00
5-yr. Transplants	(3-2)	8-12"	15.00	xxxx
*7-yr. Twice Transplants		12-18"	100.00	xxxx
*8-yr. Twice Transplants		18-24"	150.00	xxxx
*9-yr. Three Times Trans.		24-32"	250.00	xxxx

\*5 may be ordered at 100 rate. Packed with ball of peat moss.

**COLORADO BLUE SPRUCE**  
Excellent stock — finest in the country. One of the finest for Ornamental and Christmas Tree use. Sturdy and compact in form, straight stem, ranging in color from slightly blue-green to marvelous blue. The seed has been collected at very high cost from trees showing only the best characteristics.

2-yr. Seedlings	(2-0)	2-4"	5.00	25.00
2-yr. Seedlings	(2-0)	3-6"	7.00	35.00

3-yr. Seedlings	(3-0)	5-10"	12.00	60.00
-----------------	-------	-------	-------	-------

Very superior stock.

3-yr. Transplants	(2-1)	4-8"	15.00	75.00
4-yr. Transplants	(3-1)	6-12"	20.00	100.00
6-yr. Transplants	(3-3)	8-14"	40.00	200.00
*6-yr. Twice Trans.	(2-2-2)	8-12"	75.00	xxxx
*7-yr. Twice Trans.	(2-2-3)	12-16"	100.00	xxxx

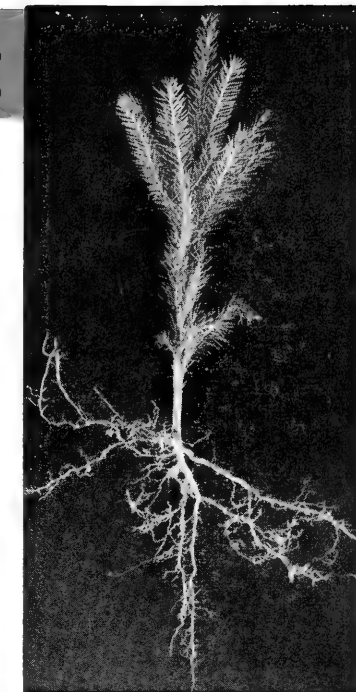
\*3 may be ordered at 100 rate. Not packed with ball of peat moss.

# EXPLANATION

## OF LIST

The figures 2-0, 2-1, 2-2-1 indicate the number of years the trees have been in the seed beds and the transplant beds. The first figure indicates the number of years in the seed bed. A dash followed by a figure indicates a transplanting. The second figure is the number of years in the first transplant bed, the third figure the number of years in the second transplant bed. Thus the sum of all figures is the total age of the tree. For instance, (2-2) indicates a tree that was transplanted when it was a seedling, and has grown two years in a transplant bed.

Number of Trees Required per acre For different spacings:	
3 x 3	4,840
4 x 4	2,722
5 x 5	1,742



Musser Exclusive Norway Spruce  
3 yr. Seedling, 10-16", Fast Growing

Items marked with (\*) may be ordered in lots of 5 at 100 rate

**CANADIAN HEMLOCK** Per 100 Per 1000  
Lacy, graceful growing habit. Can be sheared to any size. Hedges, Specimen Ornamentals. Full shade or full sunlight.

2-yr. Seedlings	(2-0)	3-6"	8.00	40.00
-----------------	-------	------	------	-------

3-yr. Seedlings	(3-0)	6-12"	14.00	70.00
-----------------	-------	-------	-------	-------

4-yr. Transplants	(2-2)	8-14"	35.00	xxxx
-------------------	-------	-------	-------	------

**BALSAM FIR**  
Extensively used for Christmas Tree and Ornamental

4-yr. Seedlings	(4-0)	5-12"	10.00	50.00
5-yr. Transplants	(3-2)	12-18"	20.00	xxxx
*7-yr. Twice Trans.	(2-2-3)	12-18"	125.00	xxxx

\*5 may be ordered at 100 rate. Packed in ball of peat moss. This has been field grown, well branched for an early Ornamental.

**DOUGLAS FIR**  
Hardy, Rocky Mountain type — superior Ornamental and Christmas Tree.

2-yr. Seedlings	(2-0)	6-8"	6.00	30.00
-----------------	-------	------	------	-------

3-yr. Seedlings	(3-0)	8-14"	10.00	50.00
-----------------	-------	-------	-------	-------

4-yr. Transplants	(2-2)	10-16"	20.00	xxxx
-------------------	-------	--------	-------	------

More Items on next Pages ➡

# MUSSER QUALITY enables us to sell 20 MILLION TREES A YEAR

MONEY DOES GROW ON TREES

# Musser's Spring 1954 Wholesale Planting List (cont.)

## Seedlings, Transplants, Rooted Cuttings

### CONCOLOR FIR Per 100 Per 1000

Excellent Ornamental — one of the best Christmas Trees. Holds needles best of any short needle tree. Bluish color.

2-yr. Seedlings	(2-0)	4-7"	12.00	60.00
3-yr. Seedlings	(3-0)	5-10"	17.00	85.00
4-yr. Transplants	(2-2)	5-10"	25.00	xxxx

These are excellent full plants and will develop at an early time into beautiful Ornamentals.

### FRASER FIR

Often called Southern Balsam Fir. Shiny green foliage is lighter on under side. Has delightful fragrance and attractive purplish cones. Hardy. Good Ornamental or Christmas Tree.

4-yr. Seedlings	(4-0)	8-12"	20.00	100.00
-----------------	-------	-------	-------	--------

### BLUE ATLAS CEDAR — Cedrus Atlantica Glauca

Ornamental evergreen. Silvery to light green needles. Pyramidal form.

2-yr. Seedlings	(2-0)	6-12"	16.00	xxxx
-----------------	-------	-------	-------	------

### AMERICAN ARBORVITAE

Popular for Hedges and Ornamentals.

3-yr. Seedlings	(3-0)	5-8"	6.00	30.00
3-yr. Seedlings	(3-0)	8-12"	9.00	45.00
4-yr. Transplants	(2-2)	6-10"	14.00	xxxx
5-yr. Transplants	(2-3)	8-16"	25.00	xxxx

*7-yr. Twice Transplants		18-24"	150.00	xxxx
--------------------------	--	--------	--------	------

\*5 may be ordered at 100 rate. Packed with ball of peat moss.

### GLOBE ARBORVITAE — Rooted Cuttings

Plants started from Rooted Cuttings assure true strains.

#### Hovey's Golden

1-yr. Transplanted		6-8"	30.00	200.00
2-yr. Transplanted		8-10"	40.00	300.00

#### Woodwardi — Dark Green

2-yr. Transplanted		6-8"	30.00	250.00
2-yr. Transplanted		8-10"	35.00	300.00

#### BERCKMAN'S Golden

*8-yr.		15-18"	250.00	xxxx
--------	--	--------	--------	------

\*5 may be ordered at 100 rate. Packed with ball of peat moss. Very compact. Plant in protected area.

### PYRAMIDAL ARBORVITAE — Rooted Cuttings

All plants started from Rooted Cuttings to assure true strains.

#### Compacta — Light Green

1-yr. Transplanted		5-7"	25.00	200.00
2-yr. Transplanted		8-12"	35.00	300.00
*8-yr. Three Times Trans.		18-24"	250.00	xxxx

#### Nigra — Dark Green

1-yr. Transplanted		6-8"	25.00	200.00
2-yr. Transplanted		6-12"	35.00	300.00

\*5 may be ordered at 100 rate. Packed with ball of peat moss.

### BARBERRY — Red

Unusually good red color. Excellent hedge plants. Red leaves in Summer, red berries in Fall and Winter.

2-yr. Seedlings	(2-0)	4-10"	15.00	60.00
-----------------	-------	-------	-------	-------

### PFITZER JUNIPER — Hetzi Glauca Per 100 Per 1000

This improved Juniper with its irregular spreading habit, fast growth, and bluish color can be used extensively in your Landscape Plans. Preferred by many for Foundation Plantings.

#### Rooted Cuttings

1-yr. Transplanted		6-8"	25.00	200.00
2-yr. Transplanted		6-10"	65.00	xxxx
*3-yr. Twice Transplanted		10-15"	90.00	xxxx

Shipped bare root.

#### Field Grown

(Spread)

*Three Times Transplanted		12-18"	275.00	xxxx
---------------------------	--	--------	--------	------

\*5 may be ordered at 100 rate. Packed with ball of peat moss.

### PFITZER JUNIPER — Green Chinese

#### Rooted Cuttings

1-yr. Transplanted		4-6"	30.00	250.00
--------------------	--	------	-------	--------

### UPRIGHT JUNIPER — Virginiana

2-yr. Seedlings	(2-0)	4-8"	6.00	30.00
-----------------	-------	------	------	-------

*8-yr. Twice Trans.		18-24"	125.00	xxxx
---------------------	--	--------	--------	------

*8-yr. Twice Trans		24-36"	175.00	xxxx
--------------------	--	--------	--------	------

\*5 may be ordered at 100 rate. Packed with ball of peat moss.

### JUNIPER — BAR HARBOR — Rooted Cuttings

Very low spreading; excellent for terraces. Bluish foliage, turning purple in winter.

1-yr. Transplanted		6-10"	35.00	xxxx
--------------------	--	-------	-------	------

### JAPANESE YEW — Transplants

True strains from Rooted Cuttings.

#### Taxus Cuspidata

1-yr. Transplanted		4-6"	25.00	200.00
--------------------	--	------	-------	--------

2-yr. Transplanted		6-8"	35.00	250.00
--------------------	--	------	-------	--------

2-yr. Transplanted		8-12"	40.00	300.00
--------------------	--	-------	-------	--------

#### Taxus Browni

1-yr. Transplanted		4-6"	25.00	200.00
--------------------	--	------	-------	--------

#### Taxus Moons Columnaris

1-yr. Transplanted		3-5"	30.00	xxxx
--------------------	--	------	-------	------

#### Taxus Hicksi

1-yr. Transplanted		4-6"	25.00	200.00
--------------------	--	------	-------	--------

1-yr. Transplanted		5-7"	30.00	250.00
--------------------	--	------	-------	--------

*Three Times Trans.		10-18"	200.00	xxxx
---------------------	--	--------	--------	------

#### Taxus Hatfield

*Three Times Trans.		12-18"	250.00	xxxx
---------------------	--	--------	--------	------

\*5 may be ordered at 100 rate.

Packed with ball of peat moss.

#### Taxus Cuspidata Capitata

Grown from seed — mostly upright.

2-yr. Seedlings	(2-0)	4-6"	20.00	150.00
-----------------	-------	------	-------	--------

#### Taxus Capitata

*5-yr. Transplanted		10-16"	200.00	xxxx
---------------------	--	--------	--------	------

\*5 may be ordered at 100 rate. Packed with ball of peat moss.

### JAPANESE LARCH

Deciduous tree, beautiful, soft needles appear in Spring. Fast growing timber tree. Especially beautiful in groves, with lower branches trimmed away.

3-yr. Seedlings	(3-0)	18-32"	7.00	35.00
-----------------	-------	--------	------	-------

## SHIPPING SEASON

will begin about March 15, weather permitting, and continue until June 1. Orders will be filled as rapidly as possible from then on. All stock shipped in a dormant condition and may be safely transplanted in any part of the country, regardless of your season.

ITEMS MARKED WITH (\*)

MAY BE ORDERED IN LOTS OF 5 AT THE 100 RATE

## Hardwood Seedlings

			Per 100	Per 1000
<b>WHITE DOGWOOD</b> — <i>Cornus Florida</i>				
1-yr. Seedlings	(1-0)	5-9"	13.00	65.00
<b>TULIP POPLAR</b>				
1-yr. Seedlings	(1-0)	4-6"	4.00	20.00
<b>SILVER MAPLE</b>				
1-yr. Seedlings	(1-0)	12-15"	4.00	20.00
<b>SUGAR MAPLE</b>				
1-yr. Seedlings	(1-0)	4-6"	4.00	20.00
<b>NORWAY MAPLE</b>				
1-yr. Seedlings	(1-0)	4-6"	8.00	40.00
<b>ASH LEAF MAPLE</b> — <i>Acer Negundo</i>				
A very hardy, rapid growing, medium sized tree. Will make good growth in dry and cold locations where all else fails. Also used for shelter belts and game food.				
2-yr. Seedlings	(2-0)	18-24"	5.00	25.00
<b>WHITE OAK</b>				
2-yr. Seedlings	(2-0)	6-12"	8.00	40.00
<b>RED OAK</b>				
1-yr. Seedlings	(1-0)	4-12"	6.00	30.00
<b>PIN OAK</b>				
1-yr. Seedlings	(1-0)	6-10"	15.00	75.00
<b>WHITE BIRCH</b> — <i>Betula Papyrifera</i>				
Seedlings		16-24"	10.00	50.00
<b>LILACS</b> — <i>Syringa Vulgaris</i>				
1-yr. Seedlings—Purple	(1-0)	2-8"	6.00	40.00
1-yr. Seedlings—White	(1-0)	3-10"	6.00	40.00
<b>GOLDEN CHAIN TREE</b> — <i>Labarnum Vulgare</i>				
Flowers are similar to the well known Wisteria Tree, often reaching 16 inches in length. Can be grown in full sun or partial shade either as shrub or tree.				
2-yr. Seedlings		6-12"	6.00	40.00
2-yr. Seedlings — cut back		12-18"	10.00	80.00
<b>FLOWERING QUINCE</b> — <i>Cydonia Japonica</i>				
One of the most outstanding shrubs of the small garden, color varies from light pink to deep red. The fruits in the Fall are apple shaped and known for their fine aroma.				
1-yr. Seedlings	(1-0)	6-9"	10.00	60.00

## Ground Cover

<b>ENGLISH IVY</b> — Evergreen Ivy				
Rooted Cuttings		5-9"	15.00	xxxx
3-yr. Transplants		6-10"	25.00	xxxx
<b>PACHYSANDRA TERMINALIS</b> — Spurge				
1-yr. Plants		2-4"	9.00	80.00
2-yr. Heavy Transplants		3-5"	25.00	xxxx
<b>MYRTLE</b> — <i>Vinca Minor</i> , <i>Periwinkle</i>				
Medium Lining Out Grade			8.00	35.00

### Special No. 12-A

# 12 ORNAMENTALS \$7.95

## LEADING EVERGREENS

3 each of the four best, most popular varieties. True strains grown from rooted cuttings, transplanted 2 years, 8 to 12 in. tall. All plants are low growing with exception of Pyramidal Arborvitae, and it can be kept sheared to smaller size for years. All four types are suitable for conventional or ranch type homes.

- 3 Pyramidal Arborvitae**    **3 Pfitzer Juniper**  
 (upright, for corners)    (spreading)  
**3 Globe Arborvitae**        **3 Jap. Yew** (spreading)

These sturdy little evergreens will be worth from \$5 to \$10 each in a few years. May be planted in a small plot in your garden for about 2 years, then transplanted to permanent place. Postpaid

## SEND FOR OUR FAMOUS CHRISTMAS TREE GROWERS' GUIDE

It gives the simple instructions necessary for selecting your planting site, the best species to plant, how to plant, and how to harvest and sell your Christmas Tree Crop.

Every land owner should read this booklet. It will lead to an excellent profit.



Specially  
Designed  
Extra Heavy  
TREE  
PLANTING  
TOOL

Shipped Postpaid  
within 600 miles

Each ..... \$8.95

## Rose Hedges

		Per 100	Per 1000
<b>ROSA SPINOSISSMA</b> — Scotch Rose			
	12-18"	30.00	150.00
Dwarf nature — extremely hardy and blooms profusely with white, pink, and yellowish flower 2" to 2½" in diameter. Stems are covered with many small spines and bristles. Withstands shearing and can be used as an ornamental or hedge plant.			
<b>ROSA RUGOSA</b> — Hedgerow Rose			
Red and white mixed. Flowers 2½" to 3½" in diameter — one of the most attractive features is the cluster of brick-red fruit in the Fall. Withstands clipping very well and is often used as a formal hedge — almost everblooming.			
2-yr. Plants	10-18"	30.00	150.00
<b>ROSA NITIDA</b> — Shining Rose			
A dwarf shrub with 7 to 9 glossy leaflets and deep pink flowers. Makes an excellent low garden shrub for mass planting, or holding banks.			
2-yr. Plants	12-24"	30.00	150.00
<b>ROSA ARKANSANA</b> — Arkansas Rose			
2-yr. Plants	8-14"	30.00	150.00
<b>ROSA MULTIFLORA</b>			
For living fence and wild life see Page 16 for complete description.			
Graded 3 mm and up	10-18"	10.00	50.00

### **JAPANESE HOLLY** — *Ile Crenata Convexa*

Unusually good ornamental form with its lustrous dark green, evergreen leaves. Small black berries in the Fall.

*Branched Transplants	6-8"	50.00	xxxx
-----------------------	------	-------	------

\*10 may be ordered at 100 rate.

### **JAPANESE ANDROMEDA** — *Pieris Japonica*

An excellent, broad-leaved evergreen. Young foliage is usually a rich bronze in Spring, later turning a normal green. Creamy white flowers in pendulous clusters to 5 inches long. Can be grown in shade or full sun.

*Branched Transplants	6-8"	50.00	xxxx
-----------------------	------	-------	------

\*10 may be ordered at 100 rate.

### **RHODODENDRON HYBRID TRANSPLANTS**

These have been grown from seed collected from hybrid red flowering plants only. These are single stem plants with heavy mass of roots. 5 may be ordered at the 100 rate.

**Strong 6 to 8 inch Plants  
Per 100 — \$100.00**



# Hedges - Windbreaks

Pines, Spruce, Hemlock, Japanese Yew, and many other species can be sheared and developed into beautiful, lasting hedges or windbreaks. They can be kept to almost any height for years. Start with small plants and shear the new tender growth each year to desired form and height.

SPACING FOR HEDGES OR WINDBREAKS — LOW Hedge, 8-10 in. apart, or double rows 12 in. apart — MEDIUM Hedge, 3 to 4 feet, plant 1 to 2 feet apart — TALL Hedge, plant 3 to 5 feet apart.

All orders will be shipped Express Charges Collect — Items marked (\*), 10 at the .100 rate.

## HEDGES

### CANADIAN HEMLOCK — One of best evergreen hedges

Lacy, graceful growing habit. Can be sheared to any size.

		Per 100	Per 1000
3-yr. Seedlings	(3-0) 6-12 in.	14.00	70.00
*4-yr. Transplants	(3-1) 8-12 in.	35.00	xxxxx

### DOUGLAS FIR — Hedge or Windbreak

Excellent fast growing evergreen hedge. Makes a firm, attractive background for flowers and statuary.

2-yr. Seedlings	(2-0) 6-8 in.	6.00	30.00
3-yr. Seedlings	(3-0) 8-14 in.	10.00	50.00
*4-yr. Transplants	(2-2) 10-16 in.	25.00	xxxxx

### WHITE PINE — Hedge or Windbreak

Fast growing, soft, dense hedge, easily adaptable to pruning—can be held to 5-to 8-ft. height for years.

3-yr. Seedlings	(3-0) 6-10 in.	7.00	35.00
4-yr. Transplants	(3-1) 5-7 in.	10.00	xxxxx
4-yr. Transplants	(3-1) 8-12 in.	15.00	xxxxx

### AMERICAN ARBORVITAE

3-yr. Seedlings	(3-0) 8-12 in.	9.00	45.00
4-yr. Transplants	(2-2) 6-10 in.	14.00	xxxxx
*5-yr. Transplants	(2-3) 8-16 in.	25.00	xxxxx

### JAPANESE YEW — Peerless evergreen hedge

Upright varieties for hedges. Can be kept sheared to any height for years. (See center pages for sizes)

### JUNIPER (Hetz Blue) — Low, fast growing, bluish color

(See center pages for sizes and prices)

### AMUR RIVER PRIVET

Hardest and best for northeastern conditions. Will grow 10 feet but may be pruned to any height or form. Branches upright, foliage oval or oblong; made denser by pruning. Hardy, almost evergreen. Plant 1 ft. apart.

6-12 in.	12.00	60.00
12-18 in.	24.00	120.00
18-24 in.	28.00	140.00

### BARBERRY — Red

Unusually good red color. Excellent hedge plants. Red leaves in summer, red berries in Fall - Winter.

2-yr. Seedlings	(2-0) 4-10 in.	15.00	60.00
-----------------	----------------	-------	-------

## WINDBREAKS

### NORWAY SPRUCE — Fast growing type

3-yr. Seedlings	(3-0) 10-16 in.	11.00	55.00
*5-yr. Transplants	(3-2) 12-18 in.	25.00	125.00

(See center pages for additional sizes)

### AUSTRIAN PINE

3-yr. Seedlings (See center pages for other sizes)	(3-0) 8-14 in.	8.00	40.00
--	----------------	------	-------

### SCOTCH PINE

3-yr. Seedlings (See center pages for other sizes)	(3-0) 8-12 in.	11.00	55.00
--	----------------	-------	-------

### CHINESE ELM

Rapid grower with small, dense foliage. Excellent for tall hedge or windbreak. Stands intense cold and extreme heat.

6-12 in.	4.00	20.00
12-18 in.	6.00	30.00
18-24 in.	9.00	45.00

### LOMBARDY POPLAR

Ideal for use as screen or windbreak. Thrives in wide range of soil and climatic conditions. Grows unusually fast, requires no pruning.

6-12 in.	5.00	25.00
12-18 in.	7.00	35.00
18-24 in.	10.00	50.00

## ROSE HEDGE

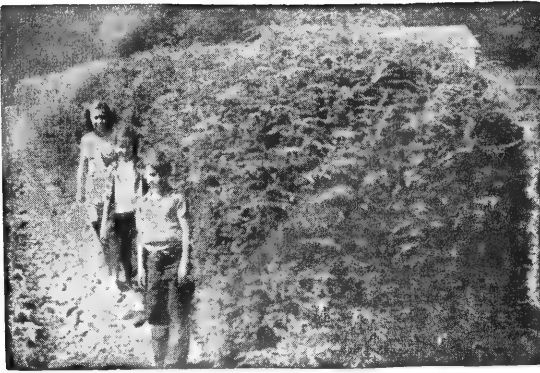
### ROSA MULTIFLORA THORNY TYPE

#### A Living Fence — A Winter Paradise for Wild Bird Life

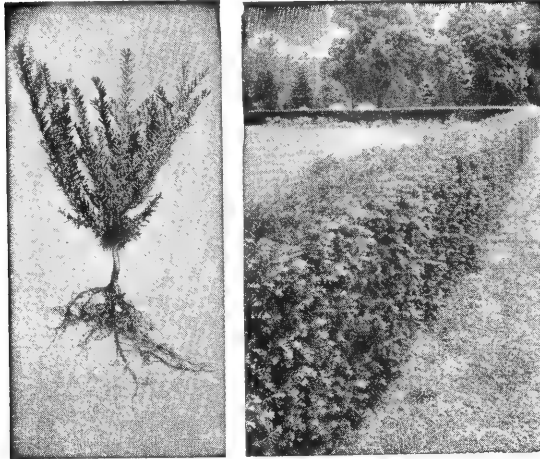
ROSA MULTIFLORA is a tall growing, very thorny shrub, like the wild rose. Very hardy even in poor soil. Grows 2 to 3 feet in a single season to an ultimate height of 6 to 8 feet. Ideal for use as living fence for farm use — keeps in cattle, horses, SHEEP and GOATS. Makes fast growing ground cover. Pinkish white blossoms literally cover plant in June. These are followed by profusion of large red berries which attract game birds such as grouse, pheasant, and partridge, as well as smaller birds. During winter its arching branches provide protection from snow and cold as well as food for birds.

ROSA MULTIFLORA JAPONICA, thorny type, BEST QUALITY, EXTRA HEAVY, 3 millimeter (tops sheared, anything under 3 millimeter graded out) Per 100 Per 1000  
**10 to 18 inch — Shipping charges collect 10.00 50.00**

For the small city lot, we recommend the hardy, disease resistant ROSA RUGOSA or ROSA SPINOSISSIMA, which can be easily maintained as a formal hedge for many years. See listing on page 15.



The Musser children beside a well developed HEMLOCK Hedge. Hemlock can be kept to any size for years by shearing. very graceful natural form if left unsheared.



A fine, heavy branched, strongly rooted Musser JAPANESE YEW (Taxus) Transplant is shown at left. At right is shown a YEW HEDGE, notable for thick growth and lustrous dark green foliage.



White Pine, Austrian Pine and Scotch Pine are among the faster growing evergreens for WINDBREAKS. Plant double rows about 6 feet apart with offset spacing for best protection.





# RHODODENDRON—AZALEA *Special!*



Section of one bed containing thousands of sturdy hybrid Rhododendron included in this offer. Musser stock is the best!

## SPECIAL NO. 9

### *Nursery Grown from True Strain Hybrid Seeds*

**BRING GORGEOUS COLOR  
TO YOUR GARDEN!**

These are all 2-year Transplants 4" to 8" tall shipped in individual planting bands, with an abundance of fine roots and large leaves. Both Rhododendron and Azalea are hardy and prefer partial shade and acid soil. The Rhododendron are hybrid seedlings grown from red flowering stock; the Azalea—3 orange and 3 red. This is an outstanding value offer. The gorgeous flowers will add greatly to your garden's beauty. All 12 plants shipped in a special packing carton to arrive safely.

**6 RHODODENDRON  
6 AZALEA**

**All 12 Postpaid For Only \$5.95**

See also Rhododendron and Azalea offered on pages 8 and 9.



Your Rhododendron and Azalea will be shipped in this strong container, insuring arrival at your home in perfect condition.



**MATURE AMERICAN HOLLY TREE**

## SPECIAL NO. 10

### **HOLLY** *Special*

This offer includes 6 plants of two different varieties as follows:

#### **4 Hardy American Holly** —pyramidal tree type

These have glossy green leaves and brilliant red berries. Included are three female plants, producing red berries, and one male plant for pollen.

#### **2 Japanese Holly**— evergreen shrub type

The above plants are all 4 to 6 inches high with a mass of roots developed in 2½-in. pots.

**All 6—\$5.95**

Shipped postpaid at proper planting time.



**ACTUAL PLANT** as furnished in this offer

# Flowering Trees

No C. O. D's. All stock on this page must be paid for in full with order. SHIPPED POSTPAID



**PINK FLOWERING DOGWOOD—WHITE**

**PINK FLOWERING DOGWOOD**.....2-3 ft. **\$3.95** Each

Outstanding among ornamental trees. A profusion of showy rose-colored blossoms in spring is followed by deep red foliage in fall. Grows 15 to 20 feet tall.

**WHITE FLOWERING DOGWOOD**.....3-4 ft. **3.25**

One of the most beautiful of all spring-flowering trees. Lovely four-petaled white blossoms are borne on spreading branches early in spring. Leaves turn brilliant red in fall. Valuable when used in lawn border or as specimen plants. Unsurpassed when used for naturalizing effect. Grows 15 to 20 feet tall.

**MAGNOLIA (Saucer Magnolia)**.....2-3 ft. **4.95**

One of the most hardy of the Magnolias. Large, fragrant, rose-colored flowers cover the tree in early spring. Blossoms when very small. Select sheltered location so flower buds will not be injured by late frosts. Grows 10 to 15 feet tall. Blooming size.

**BECHTEL'S DOUBLE FLOWERING CRAB**..3-4 ft. **3.25**

This choice Crab has endeared itself to many growers because of its spectacular flood of large, double, rose-like flowers in spring which completely hide the branches. Blooms every year. In general it resembles an Apple tree but is much smaller and finer branched. It grows in many locations and benefits from the same care given Apple trees.

**TREE WISTERIA**.....3-4 ft. **5.75**

No more lovely sight can be imagined than a Tree Wisteria in bloom. The purplish blue flowers completely cover the tree during May, transforming it into sheer beauty. In formal gardens they are indispensable. On the lawn they develop into beautiful specimens and live for generations, increasing in beauty and dignity each successive season. GRAFTED, SURE-TO-BLOOM. BALLED IN PEAT.

**PINK FLOWERING CHERRY, Kwanzan**..3-4 ft. **3.50**

A low-growing (6 ft.) tree. It makes a striking appearance on the lawn because of its unique form, and is specially attractive when covered with showy clusters of dainty, rose-pink flowers before the leaves appear in the spring.

**JUDAS TREE OR REDBUD**.....3-4 ft. **2.75**

Fable tells us that when Judas betrayed Christ this tree immediately dripped all over with drops of blood, and that is the way it looks today when its blossoms first come out. Later they turn into beautiful rosy purple flowers. Blossoms in April, before the leaves appear. 15 to 20 feet maturity height.

**PURPLE FRINGE (Smoke Tree)**.....2-3 ft. **2.50**

A tree much admired for its curious fringe or hair-like flowers that cover the surface of the plant in midsummer. It creates an effect of mystic clouds entirely covering the plant. Handsome foliage adds its share of beauty to the plant. Likes plenty of sunshine and light, well-drained soil. Grows to a height of 10 to 12 feet, and its spreading habit requires considerable space.

**TREE HYDRANGEA**.....3-4 ft. **3.50**

Large pyramidal trusses of pure snow-white blossoms appear in early August. As fall approaches they change to a luminous pink. At this stage they may be cut for all-winter dry bouquets. Blossoms measure a foot long and 6 to 8 inches wide. A low-growing tree, standing not more than 4 to 6 feet in height.

**PAUL'S SCARLET HAWTHORN**.....4-5 ft. **3.75**

Lovely flowering shrub or small tree, growing about 15 feet tall, with spreading branches. The leaves are broad, the 3 to 5 lobes much toothed. Its flowers are a brilliant rosy red, double, in large clusters and produced in immense quantities. The fruits are scarlet. Well suited for the small yard, where a maple would be too large or create too much shade.

**RED JAPANESE MAPLE**.....1-1½ ft. **6.50**

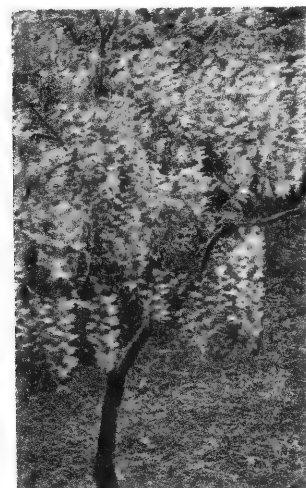
Grows no taller than 8 to 10 feet. Leaves a startling crimson all summer. Makes an excellent specimen for side yard or in formal garden. Has best color when in full sun, but will tolerate moderate shade. Trees moss balled.

**RIVERS' PURPLE-LEAVED BEECH**.....2-3 ft. **3.75**

One of the most colorful and beautiful of all trees. It is easily grown and long-lived. Leaves come out a deep maroon in the spring, turn gradually to a dark maroon-purple in summer, and in fall a rich purple-brown. Shapely in growth, rich in color, it will add that final touch of elegance to your lawn. Be sure to plant this variety. Grafted.

**RED FLOWERING CRAB (Malus Floribunda)** 4-5 ft. **3.25**

This small tree is round topped, with single carmine buds that change to pink and then white. Very heavy producer of small fruit of blood-red. Will stand severe winters and drought. Grows 15 to 20 feet.



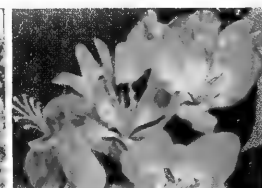
**TREE WISTERIA**



**FLOWERING CHERRY**



**RED FLOWERING CRAB**



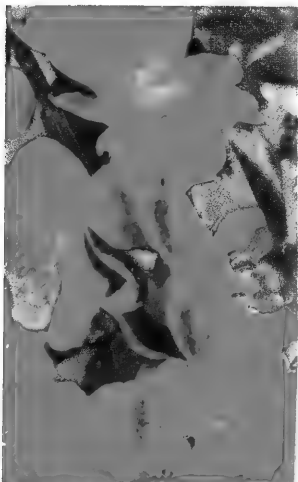
**\$1.00 Discount**

On any group of 4 Flowering Trees listed on this page, deduct \$1.00 from total list price for 4 trees.



# Musser FLOWERING SHRUBS

2-Year, No. 1 Blooming Size, 1½ to 2 feet tall. Hardy, well-branched shrubs, shipped postpaid



**RED FLOWERING QUINCE**

## RED FLOWERING QUINCE

Covered with masses of semi-double, brilliant scarlet flowers in spring, even before the attractive shiny green leaves appear. This 3 to 5-foot shrub is a "must" in landscaping.

## BEAUTY-BUSH

A magnificent flowering shrub, growing to 7 feet. Upright-growing branches arch gracefully outward. During June they are weighted down with PINK, bell-like flowers. Hardy; any soil.

## DOUBLE MOCK-ORANGE

PURE WHITE, sweet-scented, double, 2-inch flowers in May and June. Will tolerate smoke and other hard city conditions. Grows to an ultimate height of 4 to 6 feet.

## WEIGELA, Eva Rathke

Famous for its SCARLET, trumpet-shaped blooms and hardiness. Grows 3 to 5 feet high; blooms heavily in June and moderately during the rest of the season.

## FORSYTHIA, Spring Glory

A new Forsythia which bears masses of large yellow blooms. Canes grow erect, with gracefully drooping tips. Hardy in all sections; ordinary soil.

## RED SPIRAEA

A choice, low-growing shrub, distinctive in style and form. Masses of showy, bright CRIMSON flower clusters in July, and will continue to bloom until frost. Ultimate height 18 to 24 inches.



**WEIGELA**

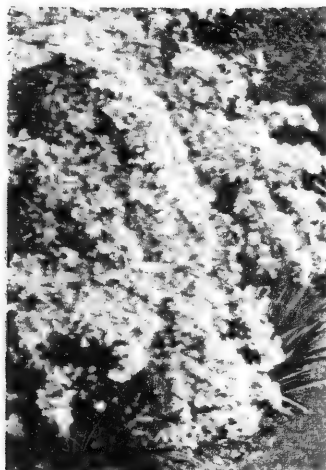
## Shrub Collection

**YOUR CHOICE OF . . . ANY SHRUBS LISTED**

(No orders for less than 3)  
No C.O.D.

**6** POST PAID FOR **\$6.95**

3 for \$4.25—10 for \$9.45



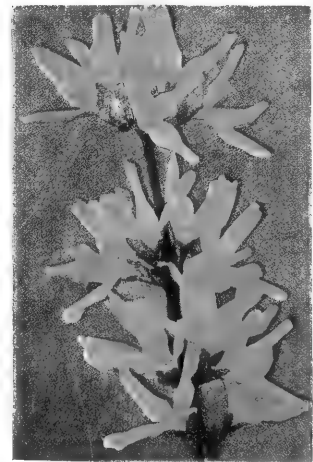
**BEAUTY-BUSH**



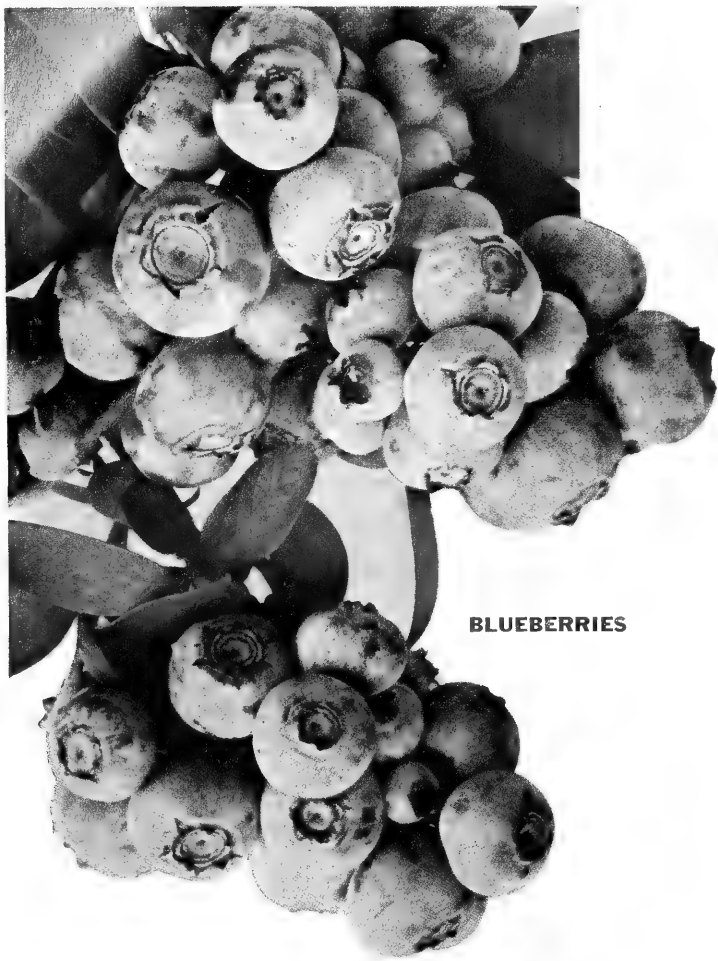
**MOCK-ORANGE**



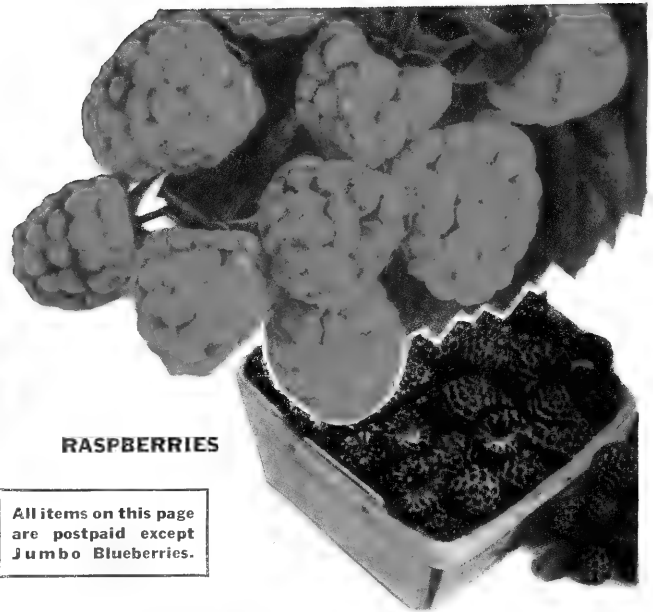
**SPIRAEA**



**FORSYTHIA**



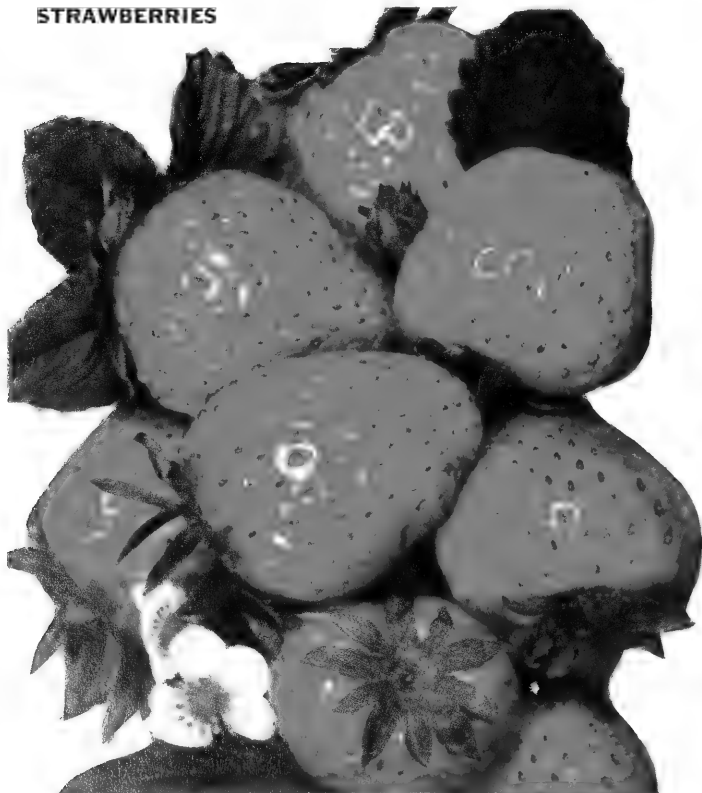
**BLUEBERRIES**



**RASPBERRIES**

All items on this page are postpaid except Jumbo Blueberries.

**STRAWBERRIES**



## BLUEBERRIES

We are offering two (2) each of the strongest bearing varieties; you are assured of a continuous crop throughout the summer. Bearing-age plants will produce fruit next year.

Healthy, vigorous Musser Quality Blueberries, 12 to 18 inches

**6 2-YEAR PLANTS . . . . . \$6.95**

### BEARING AGE SPECIAL No. 12

Blueberries, same as above, but large (18 to 24 inches), 3-year stock, which is bearing age. These plants will begin producing fruit the following year.

**6 BEARING-AGE BLUEBERRIES . . . . . \$10.50**

### "JUMBO" BLUEBERRY GARDEN

Selected Heavy Bushes, 3 ft. and up

Quicker returns, larger harvests, the largest plants for transplanting.

**6 3 ft. and up, HEAVY BRANCHES . . . . . \$15.95**  
Shipped Express Collect

## STRAWBERRIES

This is an ideal, balanced collection, enough to plant twelve 25-foot rows.

All Strawberries are shipped postpaid

100 . . . . . Early (2 varieties)	50 . . . . . Early (2 varieties)
50 . . . . . Midseason	25 . . . . . Midseason
50 . . . . . *Everbearing	25 . . . . . *Everbearing

**200 STRAWBERRY PLANTS \$7.95**      **100 STRAWBERRY PLANTS \$4.75**

*\*If late variety is preferred instead of everbearing, specify on order.*

### MUSSER'S SUPERFECTION STRAWBERRIES

A top producer of large, juicy, sweet, firm Strawberries. Most vigorous everbearer. Crops in June, Aug., Sept., Oct.

**100 PLANTS . . . . . \$6.95**

## RASPBERRIES

Your own plantings of Raspberries will bring that dainty, "fresh-off-the-vine" quality right to your table.

	12	25	50	100
<b>MORRISON.</b> 1 Yr., No. 1. . . . .	\$3 45	\$4 95	\$7 95	\$13 95
Best new black.				
<b>INDIAN SUMMER.</b> 1 Yr., No. 1. . . . .	3 95	5 95	9 95	16 75
The best red everbearer.				
<b>LATHAM.</b> 1 Yr., No. 1. . . . .	Most popular and widely planted red Raspberry.			
<b>SEPTEMBER.</b> New red everbearer..	7 50	11 45	Early. Superior quality.	

# FRUIT TREES

No C. O. D's. All stock on this page must be paid in full with order, shipping charges will be prepaid. Complete planting instructions sent.

## Dwarf Fruit

Where space is limited plant these dwarf trees. They do not spread more than 10-15 feet. Most varieties start producing fruit first year after planting. Fruit is as large or larger than standard trees. PLANT TWO (2) OR MORE VARIETIES FOR POLLINATION.

✓ DWARF APPLE TREES (3-4 ft.).....	Each	Per 3	Per 10
Select, branched, Cortland, Red McIntosh, Double Red Delicious, Yellow Delicious.		<b>3.75</b>	<b>10.50</b>
✓ DWARF PEAR TREES (3-4 ft.).....			<b>30.00</b>
Bartlett, Duchess.			

SHIPPED PREPAID

## Standard Apple

Your choice of those listed below. Plant two varieties for successful pollination (5-6 ft.) .....	1-6 Each	7 or more Each
	<b>1.95</b>	<b>1.75</b>

WRITE FOR SPECIAL QUANTITY PRICES

- ✓ **EARLY MCINTOSH** (Ripens August) — Bright red early apple. The flesh is white, tender and juicy with fine flavor. Ideal dessert apple.
- ✓ **STAYMEN'S WINESAP** Comes into bearing young. A reliable cropper. Medium to large size fruit. Slightly striped, coloring to dull red. Tree moderately vigorous.
- ✓ **YELLOW DELICIOUS** (Ripens October - March) — Bright, golden yellow of excellent quality. Firm, crisp and very juicy. Finest yellow apple. Bears young and heavily.
- ✓ **RED MCINTOSH** (Ripens October) — Very attractive red apple of highest quality. Tender, juicy, and refreshing. Hardy. Bears young and annually.
- ✓ **CORTLAND** (Ripens November - February) — Large red fruit similar to McIntosh. Very hardy and desirable as a cross pollinator.
- ✓ **RED DELICIOUS** (Ripens December - February) — Large dark red apple with crisp fine-grained flesh. Excellent flavor.

## Standard Peach

Your choice of selected varieties listed below. Sturdy. (5-6 foot trees) .....	1-6 Each	7 or more Each
	<b>1.95</b>	<b>1.75</b>

SHIPPED PREPAID

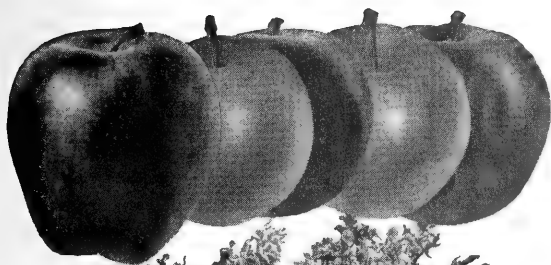
- ✓ **GOLDEN JUBILEE**  
We recommend this comparatively new, widely planted peach. It is a real money maker. Resists excessive cold. Sure cropper. Early, large yellow freestone. Flesh is yellow, tender, juicy, sweet. Ideal for home use and roadside market. (Ripens August 20-25)
- ✓ **HALE HAVEN**  
Marvelous new peach, large, beautifully colored, yellow-fleshed peach. Ripens 10 days to two weeks ahead of Elberta. Perfect free stone. Good shipper, heavy bearer. Hardy and highest quality. Extremely high color before ripening, allowing early picking for distant shipments. Include in every planting. (Ripens September 1-5.)
- ✓ **EARLY ELBERTA**  
An excellent, new variety of famous Elberta. A little rounder in shape and about 10 days earlier in ripening. Freestone. (Ripens September 6-10.)
- ✓ **RED HAVEN**  
New, desirable, early Peach, thoroughly satisfactory. Fine flavor of the South Haven and Hale-Haven. When other peaches are still green, this peach is a bright red. Hardy, free-tone. Self-pollinizing, prolific. (Ripens August 20-25.)

## Standard Pear

<b>BARTLETT, CLAPP'S FAVORITE, SECKEL</b>	
1 Each of These Three Best Varieties (4-5 ft.) .....	<b>\$5.75</b>
THREE varieties needed for pollination.	<b>for all 3, postpaid</b>

- Each, \$1.95; 7 or more, \$1.70 Each
- ✓ **BARTLETT** — Well known, adaptable to all situations. Large, golden yellow, with a reddish blush. Tender, juicy, with a delicious, musky aroma. Trees are vigorous, attain large size, bear young and annually, live long. Leading commercial and canning pear. (Ripens September-October.)
- ✓ **CLAPP'S FAVORITE** — Precedes Bartlett, which it resembles in size, shape, color and flavor. The first pear on the market. Large pale lemon yellow fruit with brown dots. Fine texture, juicy, buttery, with a rich, sweet delicate vinous flavor. Hardy and productive. Thrives where other varieties fail. (Ripens August 15-20.)
- ✓ **SECKEL** — Plant for eating fresh and pickling. Medium size, skin rich yellowish brown with deep, brownish red cheek when fully ripe. Flesh fine grained, juicy, sweet, good. Resistant to blight, very productive and hardy. Plant in fertile soils. (Ripens Sept.-Oct.)

If prepaid and Exp. Coll. items are shipped together, entire shipment is Exp. Coll.

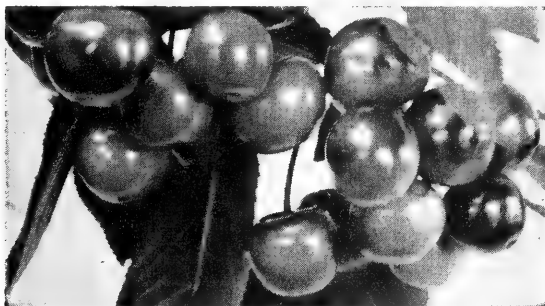


## 5-in-1 Apple

(5 varieties grafted on one tree)

For Limited Space — Yellow Delicious, Red Rome Beauty, Red McIntosh, Lodi, Cortland. Plant several of these novel trees for beauty, shade, and for fruit maturing over a long period.

4-6 ft. Well branched. Postpaid, only ..... **3.50**



## Standard Cherry

### SOUR CHERRY

- ✓ **LARGE MONTMORENCY** — Good bearers. Bright clear red, good sized, fine flavor. Eat right off the tree; makes excellent pies and other desserts. Ripens July 15.

### SWEET CHERRIES

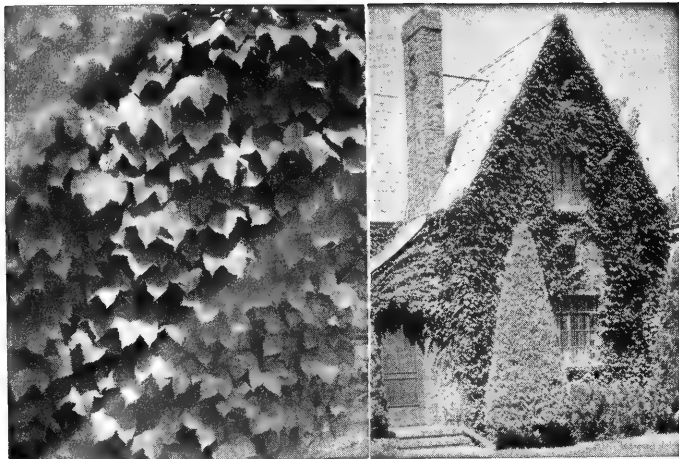
- ✓ (Two or more Sweet Cherries must be planted for pollination)
- ✓ **BLACK TARTARIAN** — Purplish black, juicy rich flavor.
- ✓ **NAPOLEON** — Yellow, flesh firm, flavor rich and sweet.
- ✓ **WINDSOR** — Pinkish flesh, almost black skin, large, juicy, firm.

	Each	Each
	1-6	7 or more
4-6 ft., 2-yr. Cherries. Postpd, each	<b>2.55</b>	<b>2.35</b>

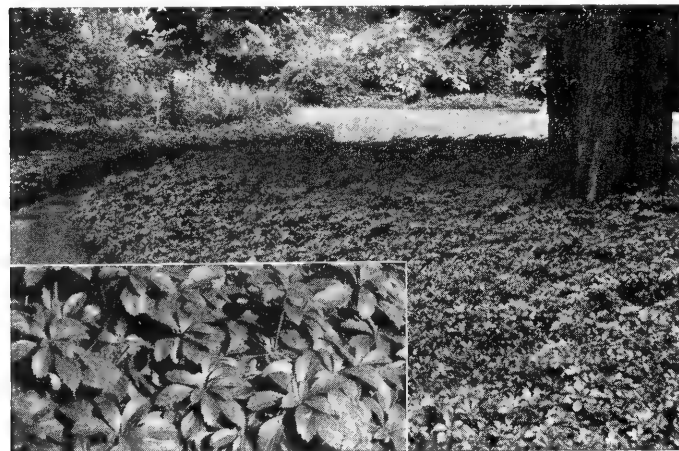


STANDARD PEACH

STANDARD PEAR



**ENGLISH IVY** — One of the very best EVERGREEN CLIMBING VINES and GROUND COVERS. Popular close clinging vine. Rich, dark green, glossy, three-lobed leaves make dense covering especially on brick or stone walls. Thrives in any good soil and under smoky city conditions. Is evergreen the year 'round. For walls, fences, etc. Especially desirable beneath shrubbery.



**PACHYSANDRA** — Excellent in masses under heavy shade of trees. A dense, lustrous evergreen, trailing vine type of ground cover. It thrives under evergreens or anywhere. If planted 8 to 12 inches apart it will give a pleasing effect immediately and in two years' time forms a solid ground cover. Prefers shade; any soil, water liberally. It is VERY HARDY. Grows 6 to 8 inches tall. Fine for terraces or any place where grass is not successful.



MUSSER FORESTS RECOMMENDS

*Popular Gardening  
and  
Country Gentleman*

See slip enclosed with this catalogue



WITHOUT . . . AND . . . WITH  
It DOES make a DIFFERENCE

## RA - PID - GRO

*Miracle Plant Food*

Ra-Pid-Gro is a complete, concentrated plant food. It speeds up growth of plants now in place, and assures more successful transplanting of new plants.

1 pound	Ra-Pid-Gro	(makes 22 gals.)	\$ 1.25	postpaid
2 pounds	Ra-Pid-Gro	(makes 44 gals.)	\$ 2.35	postpaid
5 pounds	Ra-Pid-Gro	(makes 110 gals.)	\$ 4.50	postpaid
10 pounds	Ra-Pid-Gro	(makes 220 gals.)	\$ 8.75	postpaid
25 pounds	Ra-Pid-Gro	(makes 550 gals.)	\$21.00	postpaid

USE FOR —

- EVERGREENS • SHRUBS
- SHADE TREES • ROSES

Also for Lawns, Perennials,  
Vegetables, House Plants

HOW IT IS USED

Just add water at the rate of 1 lb. of Ra-Pid-Gro to 22 gallons of water. It is ready to use as soon as it dissolves. For a small number of plants, mix at the rate of 1 teaspoonful to a quart of water.

# Ground Covers and Vines

All items on this page, payment in full with order.  
Shipping charges collect.

## ENGLISH IVY (Evergreen Vine and Ground Cover)

		Per 100	Per 1000
Rooted Cuttings	5-9"	15.00	xxxx
3-yr. Transplants	6-10"	40.00	xxxx

Individual plants grown in 4-inch pots. Mass of roots —sheared back 2 to 5 runners. Plants shipped with earth and peat moss, individually wrapped. Photo and description at left.

## PACHYSANDRA TERMINALIS (Spurge)

Very best evergreen ground cover; hardy, thrifty.

1-yr. Plants	2-4"	9.00	80.00
2-yr. Heavy Transplants	3-5"	40.00	xxxx

Lots of 10 at 100 rate. Individual plants from 2½" pots. Mass of roots, 2-3 leaders to each plant. Individually paper wrapped. See photo and description at left.

## HALL'S HONEYSUCKLE (Creeper or Climber)

Lonicera Japonica Halliana. See photo and description at left. Lots of 50 at the 100 rate.

Medium, Lining Out Grade	5.00	25.00
--------------------------	------	-------

## MYRTLE (Evergreen Ground Cover)

Vinca Minor, Periwinkle. One of the best ground covers, small shiny evergreen leaves, and violet-blue flowers in spring. Thrives in shade. Especially valuable for planting under trees or in other shaded spots where grass will not grow. Plant 1 foot apart. Lots of 50 at 100 rate.

Medium, Lining Out Grade	8.00	35.00
--------------------------	------	-------

## BITTERSWEET (Deciduous Climber or Ground Cover)

Celastrus Scandens. Showy clusters of orange-red berries for winter bouquets. Sun or shade, in any soil. Attracts birds. Lots of 50 at 100 rate.

Branched	12-18"	15.00	70.00
----------	--------	-------	-------

## VIRGINIA CREEPER (Vine and Ground Cover)

Ampelopsis Quinquefolia. A splendid ground cover, especially on sandy soils where no other vegetation will grow. Unsurpassed in beauty by any other vine in autumn when the leaves turn to the most vivid tones of crimson, scarlet and orange. Plant 3 feet apart. Lots of 50 at 100 rate.

6-12 inches	16.00	80.00
2-yr. No. 1 Plants	12-18"	20.00 100.00

Plant Climbing Vines and Ground Cover.

1 to 1½ feet apart.

# MUSSER FORESTS, Inc., INDIANA, PA.

Please Type or Write Plainly!

Date \_\_\_\_\_

Your Name \_\_\_\_\_ SHIP BY — Express  Parcel Post   
 R.F.D. or Street No. \_\_\_\_\_ Ship to \_\_\_\_\_  
 City and State \_\_\_\_\_

Shipping Date \_\_\_\_\_  
 It may be necessary to ship Roses, Berries, Fruit, Flowering, and Shade Trees at a time different than other listed stock. You may receive several shipments before your order is completed. This notice is to save you unnecessary correspondence.

Quantity	Age	Size-inches	KIND OF TREE	Unit Price	Amount



**TOTAL AMOUNT OF ABOVE ORDER**

Add 1% Sales Tax for Pennsylvania destinations

Add 50¢ packing charges on orders totaling less than 1000 trees

**TOTAL ORDER AND TAX**

**AMOUNT TO BE ENCLOSED WITH THIS ORDER**

C.O.D. BALANCE (IF ANY)

No. of Orders	Special Nos.	SPECIAL OFFERS — NO C.O.D.'S	Price	Total
	1	25 Evergreen Trees, 3 and 5 year Trees (Postpaid).....	\$ 5.00	
	2	5 Blue Spruce, 8-14 in. Transplants (Postpaid).....	3.50	
	3	10 Rhododendron Maximum, 7-12 in. (Postpaid).....	4.00	
	4	20 White Birch Seedlings, 16-24 in. (Postpaid).....	3.50	
	5	5 Pfitzer Juniper, 10-12 in.; 5 Japanese Yew, 10-16 in. (Postpaid).....	9.95	
	6	50 Living Fence (Rosa Multiflora), 10-18 in. (Postpaid).....	5.50	
	7	50 Evergreen Hedge, 8-12 in. American Arborvitae (Postpaid).....	5.00	
	8	10 Dwarf Rose Hedge (Rosa Rugosa) (Postpaid).....	4.75	
	9	6 Rhododendron, 6 Azalea, 4-8 in. (Postpaid).....	5.95	
	10	6 Holly (4 Tree Type; 2 Shrub Type), 4-6 in. (Postpaid).....	5.95	
	11	3 Shade Trees (Willow, Maple, Mountain Ash) (Express Collect).....	10.50	
	12	6 Blueberries, bearing age, 18-24 in. (Postpaid).....	10.50	
	12A	12 Evergreen Ornamentals, 8-12", 2-yr. Trans. from Cuttings (Postpaid).....	7.95	

**TOTAL TO BE ENCLOSED FOR SPECIAL OFFERS**

Add 1% Sales Tax for Pennsylvania destinations

**Amount of Check or Money Order to Cover Entire Order**

YOUR FRIENDS who are interested in securing reliable nursery stock will appreciate receiving our catalog and Price List. THANK YOU.

Name \_\_\_\_\_ Name \_\_\_\_\_  
 St. and No. \_\_\_\_\_ St. and No. \_\_\_\_\_  
 City and State \_\_\_\_\_ City and State \_\_\_\_\_



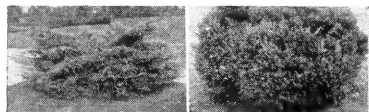


# Evergreen Ornamentals

This offer includes 3 each of four most popular varieties. True strains grown from cuttings, transplanted 2 yrs. 8-12". Plants are low growing with exception of Arborvitae, and it can be kept sheared to small size for years. All four types are suitable for either conventional or ranch type homes.



Pyramidal Arborvitae      Globe Arborvitae



Pfitzer Juniper      Japanese Yew

- 3 Pyramidal Arborvitae (Upright, for corners)
- 3 Globe Arborvitae
- 3 Pfitzer Juniper — (Spreading)
- 3 Japanese Yew (Spreading)

Special No. 12-A

**12 for 7.95**

POSTPAID

These sturdy little evergreens will be worth from \$5 to \$10 each in a few years. May be planted in small plot in garden for about 2 years then transplanted to permanent locations.

# New Moraine Locust

No Seed Pods — Fine Foliage — Wide Spreading

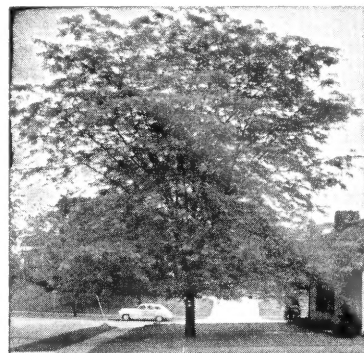
This is a vigorous, fast-growing seedless tree, disease free. A clean tree with no thorns or seed pods. The leaves are so fine that, when falling, they practically disappear. Will thrive in spite of smoke and soot, in all kinds of soil. Branches arch up and out, giving a wide-spreading vase shape, like American Elm. Makes cool shade, but permits good lawn growth. Plant Patent No. 836.

5 to 6 feet

**\$6.50 EACH**

3 for 18.50

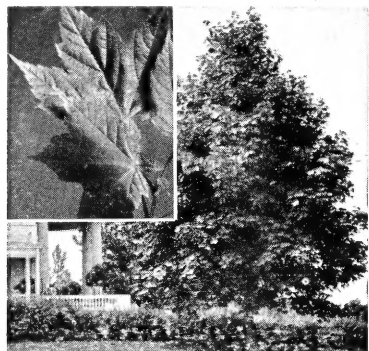
Express Charges Collect



# Crimson King Maple

The Aristocrat of Ornamental and Shade Trees

This is a beautiful form of Schwedler Maple. It develops a rounded, compact top of unusual symmetry, and has foliage of deep, purple-crimson all through the growing months. Keeps its rich coloring throughout the season. "Crimson King is beautiful beyond words." Grows 25-40 feet tall. Plant Patent No. 735.



4 to 5 feet

**\$6.50 EACH**

3 for 18.50

Express Charges Collect

# Lombardy Poplar

Will Develop a Wind Break Very Rapidly

This tree has long been used as a dignified screen for buildings or driveways, for backgrounds, or merely for privacy. It grows rapidly. Thrives in a wide range of soil and climatic conditions. Requires no pruning. The ultimate height is 60 to 80 feet.

Fine, strong seedling stock

Per 100 Per 1000

6-12" ..... 5.00 25.00

12-18" ..... 7.00 35.00

18-24" ..... 10.00 50.00

5- to 6-foot Trees

each, 1.50; 3 for 4.00

10 for 8.00; 100 for 65.00

Express Charges Collect



# Musser Heavy Flowering Climbers

**NEW DAWN** (Pink) — Perfect Hybrid-Tea-like blooms all season of Apple-blossom-pink, and an old rose fragrance. Superb for bouquets and arrangements. Long stems. \$1.35 each; 3 for \$3.85; 6 for \$7.25, postpaid.

**CLIMBING PEACE**. Plant Patent No. 932 — Top favorite. Similar to ever popular Hybrid Tea. Bud is deep yellow with edges of petals cerise. Opens to 5-inch bloom, canary-yellow, pale gold, cream, pearly white, and apple blossom. \$2.50 each; 3 for \$6.60, postpaid.

**GOLDEN CLIMBER** — Golden yellow climber to complete your color range. Vigorous grower and blooms resemble Hybrid Tea. Cut in bud and keeps well as blooms open. \$1.35 each; 3 for \$3.85; 6 for \$7.25, postpaid.

**PAUL'S SCARLET CLIMBER** — Midseason. Vivid scarlet and marvelously attractive blooms for weeks. \$1.35 each; 3 for \$3.85; 6 for \$7.25, postpaid.

**CLIMBING SNOWBIRD** — A small to medium sized snow white climbing rose. Exquisite, long, flaring, white buds and snowy, many-petaled, high-centered flowers. Outblooms other white roses by at least two to one. \$1.35 each; 3 for \$3.85; 6 for \$7.25, postpaid.

## ROSE ARBOR COLLECTION

- 1 Paul's Scarlet
- 1 Blaze
- 1 New Dawn

All 3 only \$3.25

Postpaid

A \$3.85 Value. You Save 60c

# Everblooming Floribunda Roses

**GOLDILOCKS**. Plant Patent No. 672 — A golden Floribunda with showy clusters of bright yellow. \$1.50 each; 3 for \$3.90; 12 for \$15.60.

**VOGUE**. Plant Patent No. 926 — Brilliant cherry-coral with tea shaped 3 to 4 inch buds. \$2.25 each; 3 for \$6.00.

**PINOCCHIO**. Plant Patent No. 484 — A soft clear pink of salmon flush. \$1.50 each; 3 for \$3.90; 12 for \$15.60.

**RED PINOCCHIO**. Plant Patent No. 812 — Dark carmine which bears untading flowers all summer long. \$1.50 each; 3 for \$3.90; 12 for \$15.60.

**GERANIUM RED**. Plant Patent No. 811 — Heavily scented of a true Geranium color. \$1.50 each; 3 for \$3.90; 12 for \$15.60.

**FASHION**. Plant Patent No. 789. Oriental red always covered with clusters. \$2.00 each; 3 for \$5.25.

## PINOCCHIO COLLECTION

- 1 Red Pinocchio
- 1 Pinocchio
- 1 Vogue

All 3 for \$4.60

A \$5.25 Value. You Save 65c

See also pages 6 and 7 for PATENTED ROSES and HYBRID TEA ROSES

MUSSER FORESTS, INC.

Indiana, Pa.

RETURN POSTAGE GUARANTEED

Sec. 34.66 P. L. & R.

U. S. POSTAGE

PAID

INDIANA, PA.

Permit No. 122

LIBRARY U. S. DEPT.  
OF AGRICULTURE  
WASHINGTON 25 D C

Money

Does

Grow on Trees!

# Musser's SPECIAL OFFERS - 1954

Musser Cultured Plants  
All are EXTRA Quality  
Shipped to you Postpaid

## Special No. 1

### Evergreen Trees



Develop Quickly into Beautiful Specimens

- 5 — Scotch Pine ..... 8 to 12 inches
- 5 — Austrian Pine ..... 8 to 16 inches
- 5 — Norway Spruce ..... 10 to 16 inches
- 5 — Colorado Blue Spruce... 6 to 10 inches
- 5 — Douglas Fir ..... 8 to 14 inches

3- and 5-yr. Select  
Large, Healthy Trees

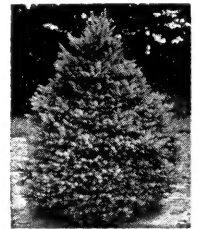
**25** POSTPAID at  
Planting Time for **\$5.00**

## Special No. 2

### Colo. Blue Spruce

6-YR. TRANSPLANTS

Excellent 8" to 14" transplanted stock. Color, blue-green to marvelous blue. Compact sturdy. Handsome specimens or hedge. "The King of Ornamentals."



**5** POSTPAID at  
Planting Time for **\$3.50**

## Special No. 3

### Rhododendron

7" to 12" single stem to lightly branched. Fine young plants — will grow bushy. Maximum—Excellent ornamental, large clusters of gorgeous flowers. Prefers partial shade.



**10** POSTPAID at  
Planting Time for **\$4.00**

*Gives a natural "Woodsy" effect*

## Special No. 4

### White Birch

Twenty 16" to 24" seedlings. Bark turns creamy-white after 3 to 4 years. Graceful clump by planting several together in each location. Hardy.



**20** POSTPAID at  
Planting Time for **\$3.50**

## Special No. 5 Foundation Planting

### 5 Japanese Yew and 5 Pfitzer Juniper

An ideal start on foundation planting at minimum cost.

YEW — Upright, compact cone shape, deep, rich green foliage. Sun or shade. Branched twice-transplants, 10 to 16 inches tall. JUNIPER — Spreader, blue green, fast growing for sunny spots. Branched twice-transplanted, 10 to 12 inches tall.



Upright Yew



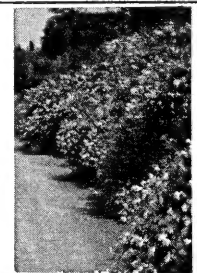
Spreading Juniper

**10** POSTPAID at  
Planting Time for **\$9.95**

## Special No. 6

### LIVING FENCE

(Rosa Multiflora) HEAVY 3MM STOCK 10" to 18". Dense, thorny fence. Prune to any height. Clusters of pinkish-white wild roses in June; bright red berries follow. Fast growing.



**50** POSTPAID at  
Planting Time for **\$5.50**

## Special No. 7

### 50 Evergreen Hedge \$5.00

3-year Seedling AMERICAN ARBORVITAE Start now with these 8 to 12 inch sturdy seedlings, and have an outstandingly beautiful evergreen hedge. Shear it at any desired shape and height.



## Special No. 8

### Dwarf Rose Hedge Low Growing Rosa Rugosa

These two-year seedlings make an ideal backyard or garden fence, as they withstand trimming very well and are often used as a formal type hedge. Red and white flowers 2 1/2" to 3 1/2" in diameter makes this one of the most attractive low garden hedges — almost everblooming. Red fruit in the fall. 10-18 in. tall.

**10** POSTPAID at  
Planting Time for **\$4.75**

All Special Offers are shipped Postpaid at proper planting time. Use enclosed Order Blank.